



Dear **{!Contact.FirstName}**,

LSE is world renowned for its academic reputation in the social sciences.

LSE academics - many of whom teach undergraduate students! - are engaged in research that is shaping the world. Look no further than the [Grantham Research Institute](#), a leading global force in the study of climate change and the environment; or [LSE IDEAS](#), our foreign policy think-tank, which was acknowledged as the [number one university-affiliated think tank in the UK and second in the world](#) in 2020.

LSE Research

LSE's outstanding contribution to social science, has [been recognised](#) by the 2021 Research Excellence Framework (REF), the most recent REF. LSE is shown as the top university in the UK, based on the proportion of 'world-leading' research. LSE is also the joint second ranking university in the UK overall, when considering research outputs, research impact and research environment.

Take a look at three of the [Impact Case Studies](#) below:



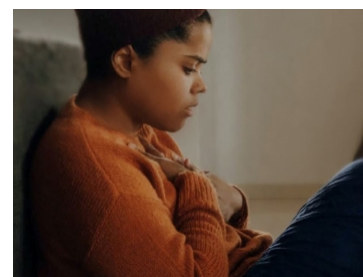
Improving refugee protection policies in Europe

European Institute



Shaping global climate change policy

Grantham Research Institute



Supporting policy and practice change for better mental health

Care Policy and Evaluation Centre (CPEC)

Academic Opportunities for Students

There are several opportunities to get involved with research yourself while at LSE. The [LSE's Phelan United States Centre](#) offers several [Undergraduate Research Assistantships](#) each year, allowing undergraduate students from across the School the chance to conduct research alongside academic faculty. In the past, General Course students were selected to hold these highly sought-after positions.

In addition to the expertise already on campus, a wide range of eminent and knowledgeable individuals are regularly invited to speak to the LSE community. Our popular [Public Lecture Programme](#) has brought prominent speakers from around the world to LSE, including President of the EU Commission and LSE alumna Dr Ursula von der Leyen; US Speaker of the House Nancy Pelosi; Nobel Prize winners Amartya Sen and Paul Krugman; former UK-Prime Minister Gordon Brown, plus many more. If you'd like to sample some of the lectures, you can find them on our [website](#).



A further way to extend your academic experience at LSE is to participate in our annual visit to [Cumberland Lodge](#). The visit offers you the opportunity to join fellow students on an academic weekend away during your first weeks at the School. The residential visit includes talks on a wide range of topics, bringing together academics from across the School. It is also a fantastic early opportunity to meet and mix with other General Course students in a relaxed and informal setting. More information will be sent out in the coming months!

If you haven't already, follow [@LSE_GeneralCourse](#) on Instagram to see more of student life in London.

Best wishes,

The General Course team

Diogo, Lauren, Mark, Rachel & Will

Disclaimer: General Course Offer Holder Newsletters are sent to all those holding either a conditional or an unconditional offer to join the programme. *If you hold a conditional offer to join the General Course you will need to fulfil the specific conditions of your offer by the relevant deadline to confirm your place on the programme.*