



THE LONDON SCHOOL
OF ECONOMICS AND
POLITICAL SCIENCE ■

Department of Statistics
Programme Q&A Session
MSc Data Science

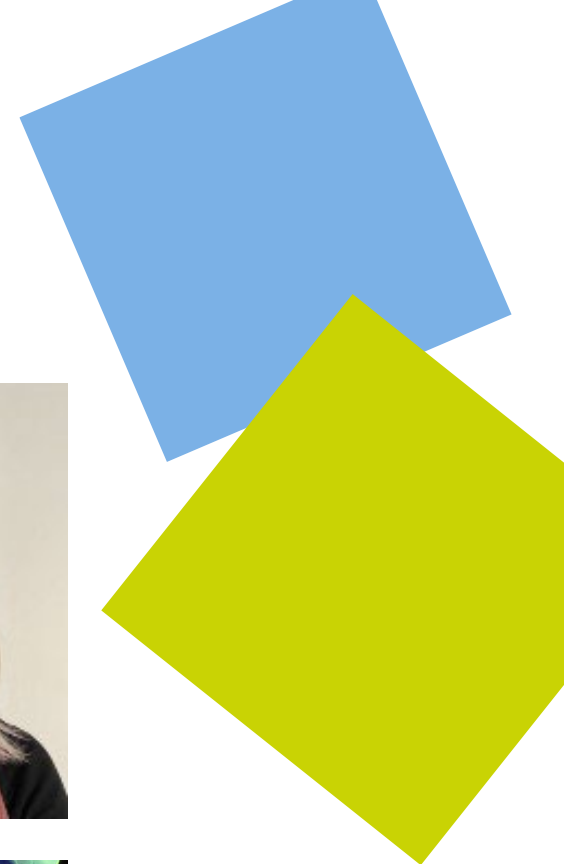
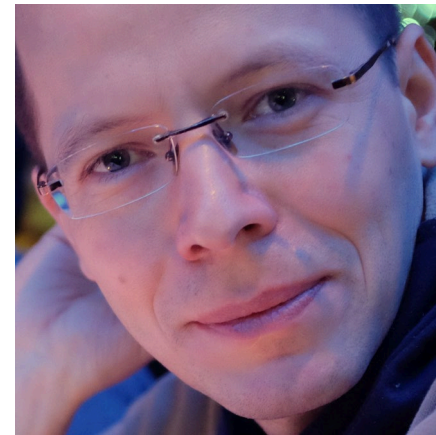




THE LONDON SCHOOL
OF ECONOMICS AND
POLITICAL SCIENCE ■

Introduction

- [Sarah McManus:](#)
 - MSc Programmes Manager
 - Office: COL 6.11 ([campus map](#))
 - E-mail: stats-msc@lse.ac.uk
- [Zoltan Szabo:](#)
 - Programme Director and academic mentor to all MSc Data Science students
 - Office: COL 5.14
 - E-mail: z.szabo@lse.ac.uk





THE LONDON SCHOOL
OF ECONOMICS AND
POLITICAL SCIENCE ■

How can Sarah help you?

- Answer **non-academic queries** related to
 - department policies,
 - school policies,
 - wellbeing,
 - events, . . .

Wellbeing





THE LONDON SCHOOL
OF ECONOMICS AND
POLITICAL SCIENCE ■

How can Zoltan help you?

- Provide **advice** on and give **final approval of course choices** at the beginning of Autumn and Winter Term.
- Discuss any **academic challenges** you may experience.
- Provide pastoral guidance on non-academic issues and **refer** you, as necessary, **to other support services** in the School.
- Maintain **regular contact** with you through direct one-to-one meetings and through regular email contact as needed.
- Follow up on any concerns regarding your **attendance and progress**.





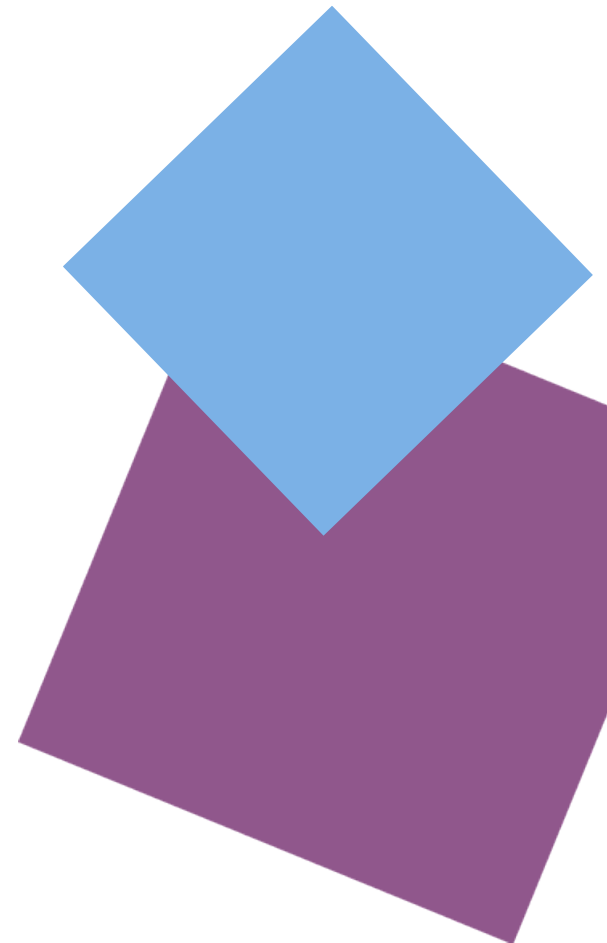
THE LONDON SCHOOL
OF ECONOMICS AND
POLITICAL SCIENCE ■

Programme structure: 4 units

See more details in the
Programme Regulations,
accessed via the [LSE Calendar](#).

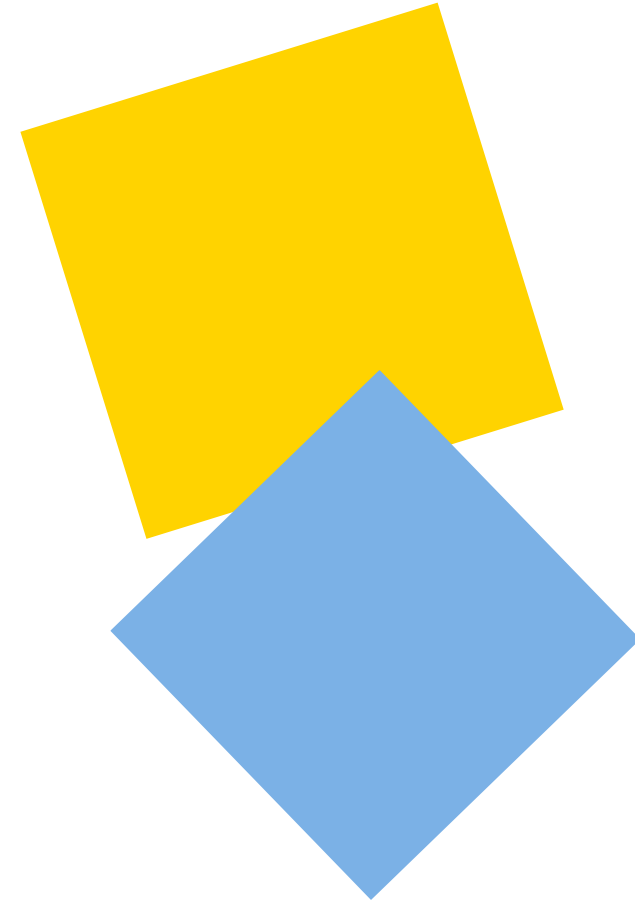
- Compulsory:
 - ST443 Machine Learning and Data Mining (H),
 - ST445 Managing and Visualising Data (H),
 - ST447 Data Analysis and Statistical Methods (H),
 - ST498 Capstone Project (F).

⇒ **2.5** = 3 × 0.5 + 1.
- Optional courses: **1.5** = 3 × 0.5 (≥ 0.5 unit of ST***)
 - next pages.



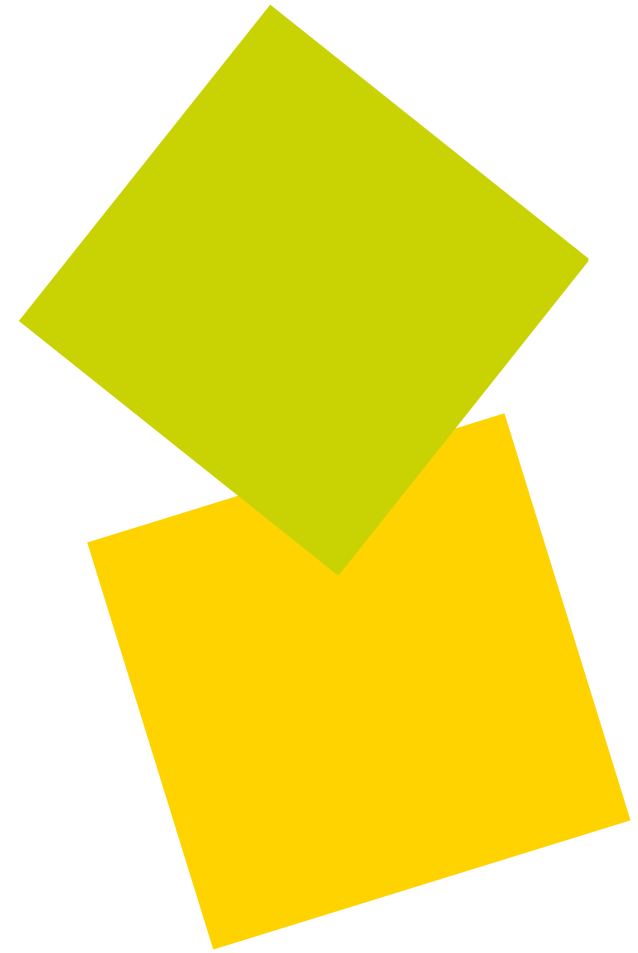


- Data science options [ST = statistics]:
 - ST444 Computational Data Science (H),
 - ST446 Distributed Computing for Big Data (H),
 - ST449 Artificial Intelligence (H),
 - ST451 Bayesian Machine Learning (H),
 - ST455 Reinforcement Learning (H),
 - ST456 Deep Learning (H),
 - ST457 Graph Data Analytics and Representation Learning (H),
 - ST459 Quantum Computing (H) – new!





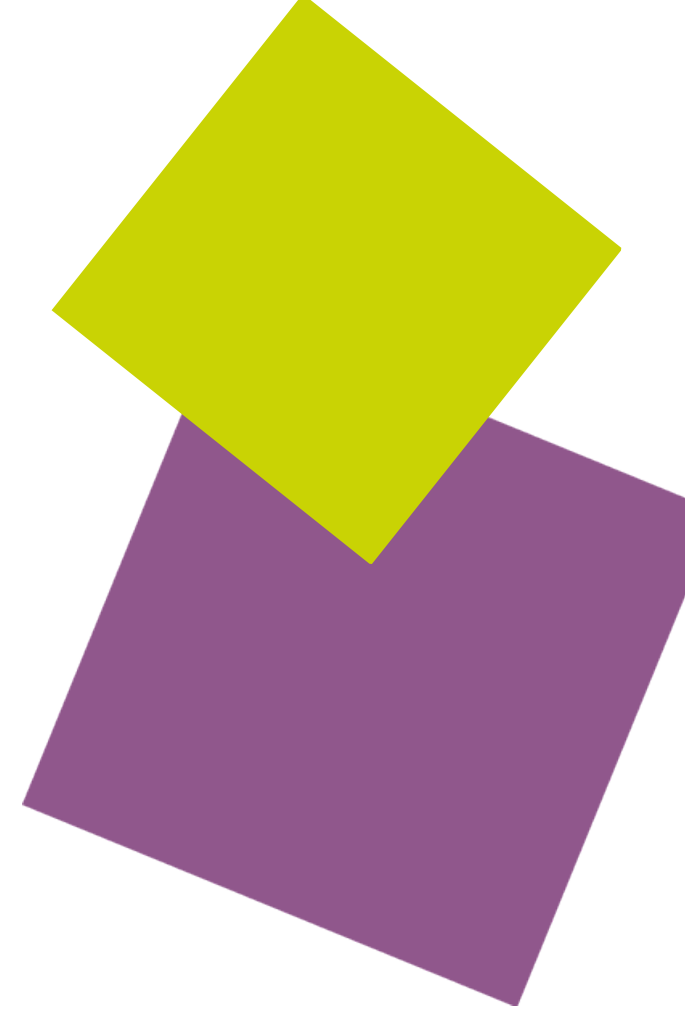
- Other statistics [ST = statistics]:
 - ST405 Multivariate Methods (H),
 - ST411 Generalised Linear Modelling and Survival Analysis (H),
 - ST422 Time Series (H),
 - ST429 Statistical Methods for Risk Management (H),
 - ST436 Financial Statistics (H),
 - ST454 Applied Spatio-temporal Analysis (H).





THE LONDON SCHOOL
OF ECONOMICS AND
POLITICAL SCIENCE ■

- Options from other departments [MA = maths, MY = methodology]:
 - MA407 Algorithms and Computation (H),
 - MA424 Modelling in Operations Research (H),
 - MY459 Quantitative Text Analysis (H),
 - MY461 Social Network Analysis (H),
 - MY470 Computer Programming (H).

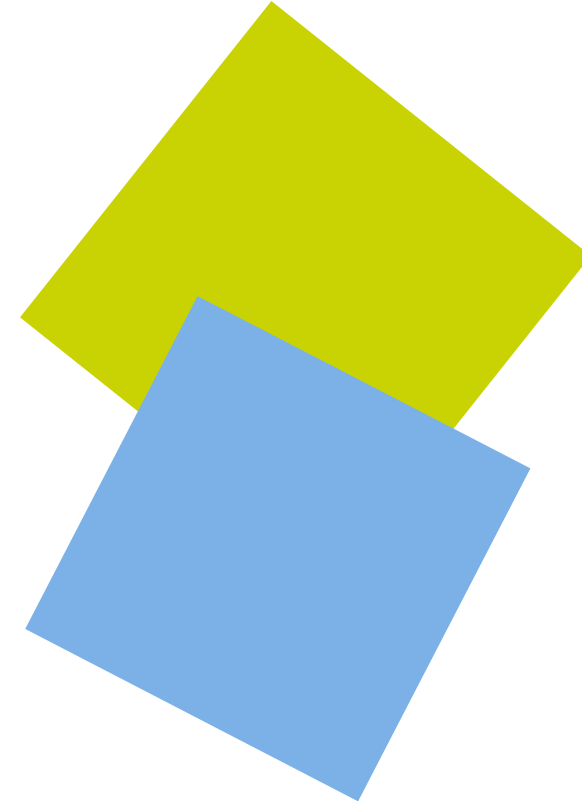




THE LONDON SCHOOL
OF ECONOMICS AND
POLITICAL SCIENCE ■

Note on course selection

- Most courses in the Dept. of Statistics: **controlled access**
 - limited numbers and you must meet their pre-requisites.
- Many other departments operate similarly: [complete list](#).
- **Essential:**
 - Select your courses ASAP to maximize your chances of being accepted!



Capstone project

- Real-world data science project with a company (Nov – Aug)



Questions arrived

- **Q1:** In what months is the Capstone Project?
- **A1:** Nov. – Aug.
- **Q2:** Is a dissertation not required for the MSc Data Science programme?
- **A2:** Correct; you'll have Capstone project instead.
- **Q3:** In the first 3 courses ... theory and application, or theory only?
- **A3:** Both (theory → lecture; applications → seminar).

Questions arrived - 2

- **Q4:** What industries do graduates usually enter?
- **A4:** Applied maths => various sectors, e.g.
 - Financial and Professional Services,
 - Information, Digital Technology and Data,
 - FMCG (fast-moving consumer goods), Manufacturing and Retail,
 - Accounting and Auditing,
 - Government, Public Sector and Policy.

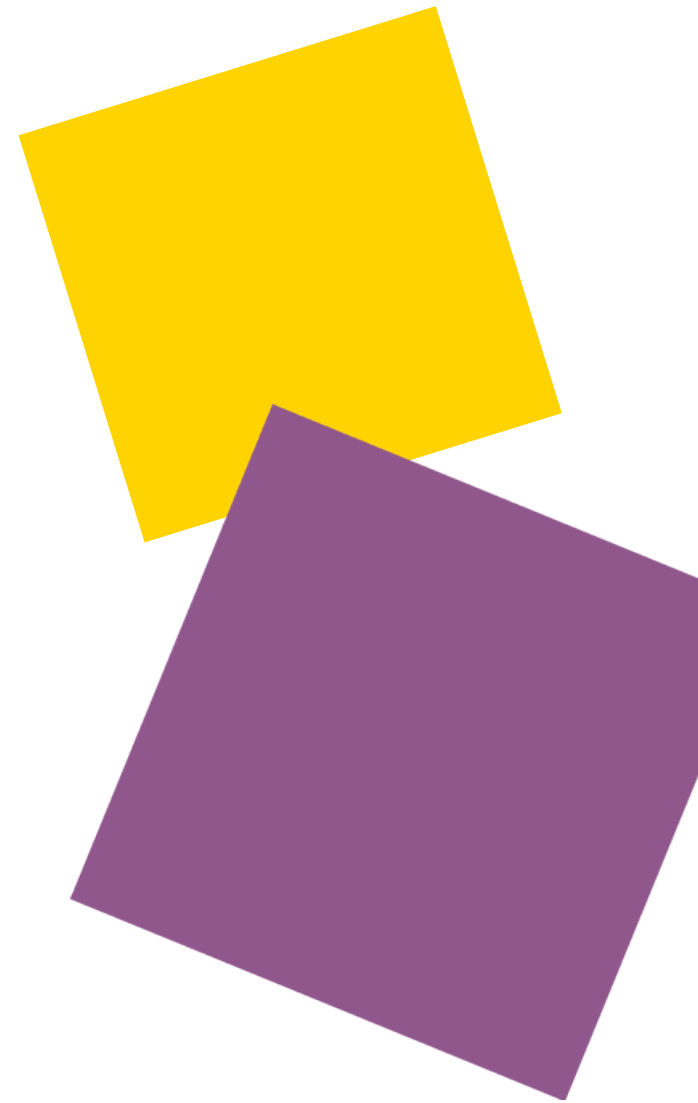
Questions arrived - 3

- **Q5:** What career development services does the school offer, such as internship opportunities, career guidance, and alumni networks?
- **A5:**
 - [LSE Careers](#) (career advisory services and support),
 - Department: Statistics Research Showcase (includes talks from alumni), Alumni Mixer events, [Seminars](#).
 - More on career services from Sarah & 3 current students (May 29, 1pm-).



Useful skills to pick up

- LaTeX (Overleaf): high-quality article/book/TR/poster/business card/. . . with minimal effort.
- Writing etiquette:
 - Top ML conferences: NeurIPS, ICML, AISTATS, UAI, COLT,
 - Top journal: JMLR.
- Publication morale: open, often conference; arXiv (stat.ML, cs.LG, math.OC).
- Mailing lists: ML-News, UAI, allstat, Connectionists.
- Programming language: Python, R.
- Operating system: Linux.





THE LONDON SCHOOL
OF ECONOMICS AND
POLITICAL SCIENCE ■

Academic support throughout your studies

Academic Mentor – Programme Director

Programmes manager

[LSE Life](#): academic workshops

[Language Centre](#)

[Academic Support Librarians](#)

[Digital Skills Lab](#)





THE LONDON SCHOOL
OF ECONOMICS AND
POLITICAL SCIENCE ■

Getting In Touch

Questions about the Department or the MSc Data Science:

Sarah McManus

MSc Programmes Manager

First point of contact for administration

Email: Stats-Msc@lse.ac.uk

Zoltan Szabo

MSc Data Science Programme Director

First point of contact for academic queries

E-mail: Z.Szabo@lse.ac.uk

Questions about your application: Graduate Admissions Office

Search 'LSE Graduate Admissions' then go to the Knowledge Base

If your question is not answered, submit an enquiry through the Knowledge Base



THE LONDON SCHOOL
OF ECONOMICS AND
POLITICAL SCIENCE ■

Questions?

