

The LSE logo consists of the letters 'LSE' in a white, bold, sans-serif font, centered within a solid red square. The background of the entire page is a photograph of three young adults (two men and one woman) smiling and standing outdoors in front of a building with green trees. The image is decorated with several overlapping colored squares (blue, yellow, pink) and thin white lines.

THE LONDON SCHOOL
OF ECONOMICS AND
POLITICAL SCIENCE ■

Summer
School
2026 ■

World-class city
World-class courses
World-class experience

99%

of students would
recommend LSE
Summer School

2026 Dates

Session One

22 June - 10 July

Session Two

13 July - 31 July

Session Three

3 August - 21 August

LSE is ranked
1st in the UK

The Times and Sunday Times Good
University Guide 2026

Contents

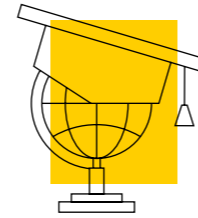
Welcome to LSE Summer School	4
Our Students	6
London Life	8
Accommodation	10
Campus Life	14
Social Programme	16
Spark: Professional Skills	18
Academic Information	24
Applying to Summer School	29



"LSE helps students prepare for bright futures in a dynamic world. Our motto 'rerum cognoscere causas' means 'to know the causes of things,' and was chosen to support the School's founding purpose, 'for the betterment of society.' Our globally renowned Summer School gives you a unique opportunity to share in this tradition of academic excellence and participate in an international exchange of ideas."

Professor Larry Kramer
President and Vice Chancellor

Welcome to LSE Summer School



“Welcome to the London School of Economics and Political Science, one of the foremost social science universities in the world.

LSE is a global community of people and ideas in the beating heart of central London. We're a specialist social sciences university, ranking sixth in the world in the QS subject rankings 2025 and the UK's top university in The Times and Sunday Times Good University Guide 2026, as well as University of the Year in 2025.

LSE Summer School is the largest of its kind in Europe. We offer an exciting range of courses across the wide spectrum of LSE's world-class teaching, taught by leading scholars in their fields, and they can be taken for credit towards your degree at your home institution.*

At Summer School, you'll gain an invaluable insight into leading-edge thinking in each discipline and be encouraged to reflect on the key issues facing society today.

Lecturers are experts in their chosen fields and are committed to teaching with academic rigour and contemporary relevance. Our faculty are actively involved in academic research and many advise world-leading companies and government bodies.

You can choose to study for three, six or nine weeks, in one of the most well-renowned institutions in the world, in one of the greatest cities in the world. I'm delighted to invite you to join us in 2026 – to challenge yourself and experience an unforgettable time in your life.”

* Subject to approval by your home institution



Professor Peter Trubowitz
Academic Director, LSE Summer School

Peter Trubowitz is Professor of International Relations and Director of the US Centre at the London School of Economics and Political Science and Associate Fellow at Chatham House, Royal Institute of International Affairs. His main teaching and research interests are in the fields of international security and comparative foreign policy, with special focus on American grand strategy and foreign policy. He also writes and comments frequently on US party politics and elections and how they shape and are shaped by America's changing place in the world.

Before joining LSE, Peter was Professor of Government at the University of Texas at Austin. He has also held visiting positions at Harvard, Princeton, University of California at San Diego, Universidad de Chile, Centro de Investigación y Docencia Económicas (CIDE) in Mexico City, and the Beijing Foreign Studies University, where he was the J. William Fulbright Distinguished Lecturer in American Foreign Policy.

LSE was founded in

1895

and is ranked **3rd in Europe** for social sciences and management subjects

This year, LSE is celebrating 130 years of impact

130 EST 1895
years

Our courses are taught and examined by leading LSE faculty, giving you the same learning experience as full-time students

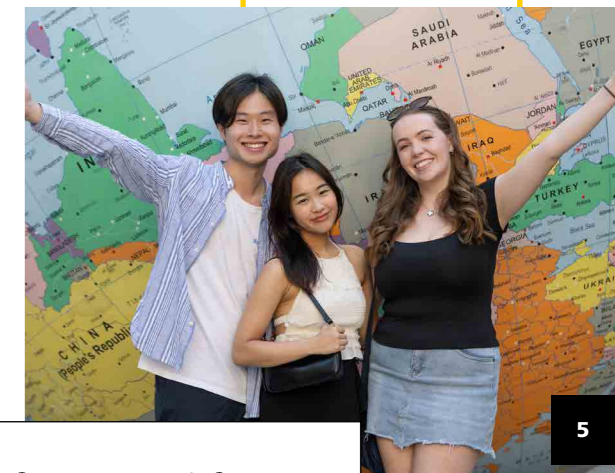


“LSE Summer School was special to me because I was able to study subjects far beyond my university curriculum. Meeting people from around the world while experiencing a summer in London was amazing.”

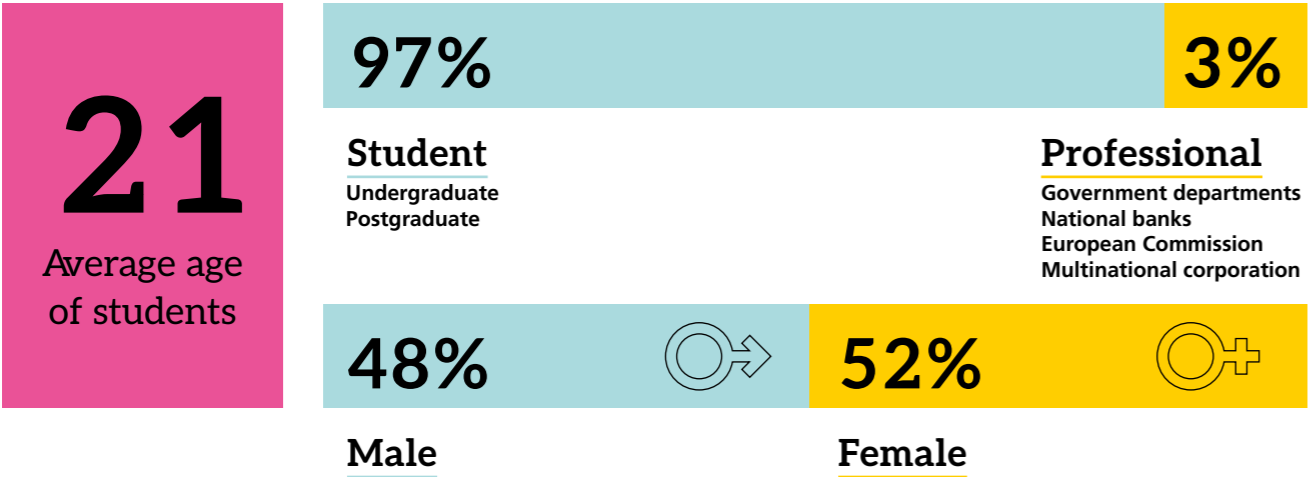
Olivia Lada Moczarski, UK
University of Cambridge

21
Nobel Prize winners

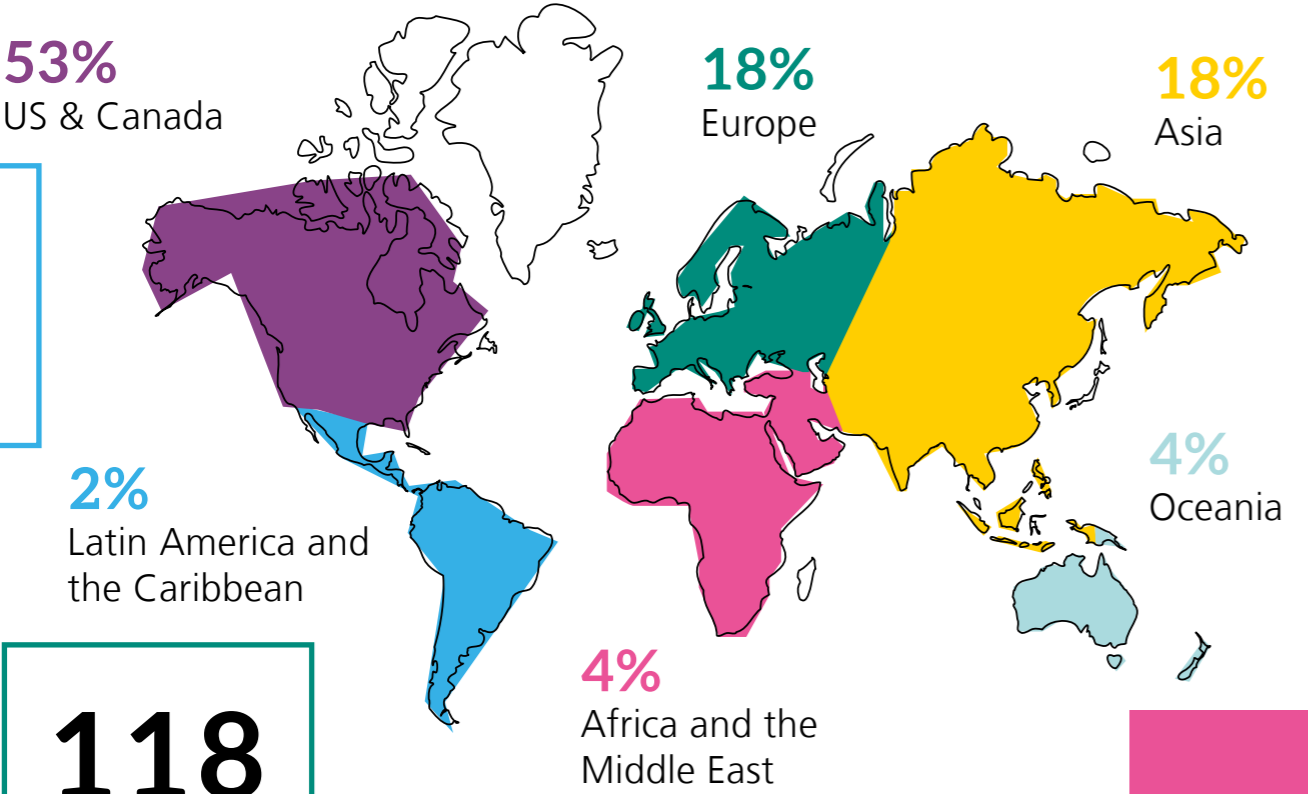
42
World leaders have taught or studied at LSE



Our Students



Where our students come from



118

Nationalities represented

* Summer School 2025 data



In 2025 students came from leading universities across the globe, including:

- Asia**
University of Nottingham Ningbo
University of Hong Kong
Singapore Institute of Management
- Africa and Middle East**
Bilkent University
American University of Beirut
Sorbonne University Abu Dhabi
- Europe**
IE University
Universita Cattolica del Sacro Cuore
University of Copenhagen
- Latin America and the Caribbean**
Instituto Tecnológico Autónomo de México
Universidad del Pacifico
Universidad de los Andes
- Oceania**
University of Queensland
University of Melbourne
University of Sydney
- USA and Canada**
Yale University
University of North Carolina at Chapel Hill
University of Texas at Austin
Northeastern University
Harvard University
Princeton University
University of Michigan
Northwestern University
University of Toronto
University of California, Berkeley



“Studying in London was an unforgettable experience. The city’s diversity, food, entertainment, and fast-moving atmosphere made every day feel like an adventure!”

Saitarun Evani, USA/India
University of Minnesota



London Life

Live in the heart of the city.

 — LSE accommodation



A Taste of Britain and Beyond

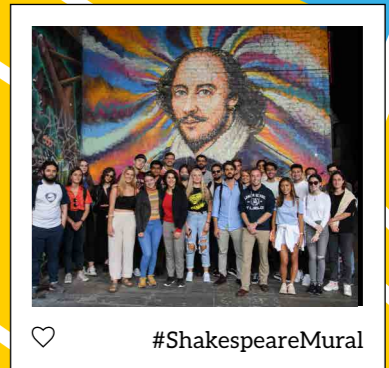
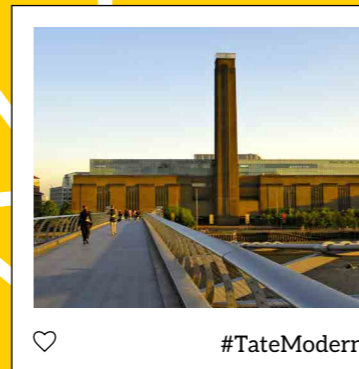
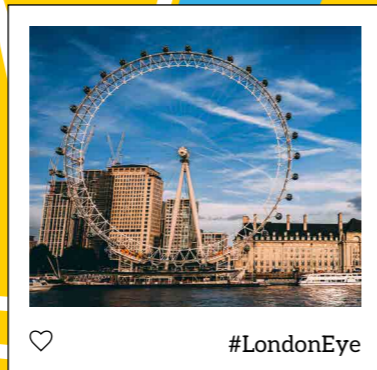
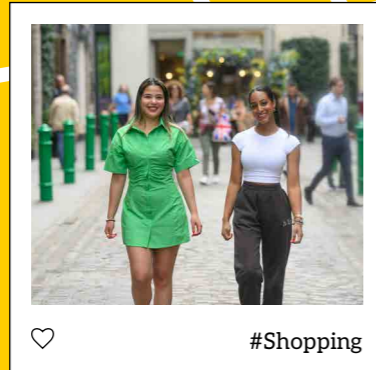
Indulge in classic British dishes like fish and chips or a hearty Sunday roast, and wander through London's vibrant food markets to discover the best in both local and global cuisines.


Historic London

Explore London's rich history on foot from the LSE campus, with many areas of historic significance within walking distance.

Iconic skyline

Take in the view of London's ever-changing skyline. You will spot the striking Shard, the instantly recognisable Gherkin and other renowned buildings.



 Explore Summer School life on Instagram: @lse_summer_school

Accommodation

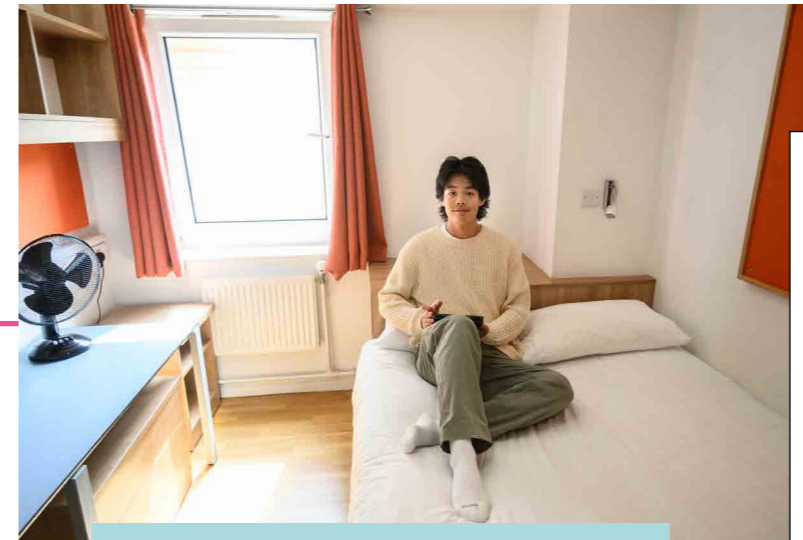
LSE offers a range of great value accommodation in several central London locations. These halls are within easy travel distance to LSE and you'll stay with lots of fellow Summer School students. You can book your LSE accommodation as soon as you have your course offer.



Why stay at LSE Accommodation?

- Connect with students from all over the globe
- Central London student accommodation
- Rooms to suit a wide variety of budgets*:
 - Single, double and triple rooms
 - Shared bathroom or private ensuite
- Breakfast included
- 24/7 support - Reception desk and security
- Bookings can be made once you've received an offer

* Check the website for prices. Please note, some accommodation options offer discounted prices in sessions two and three.



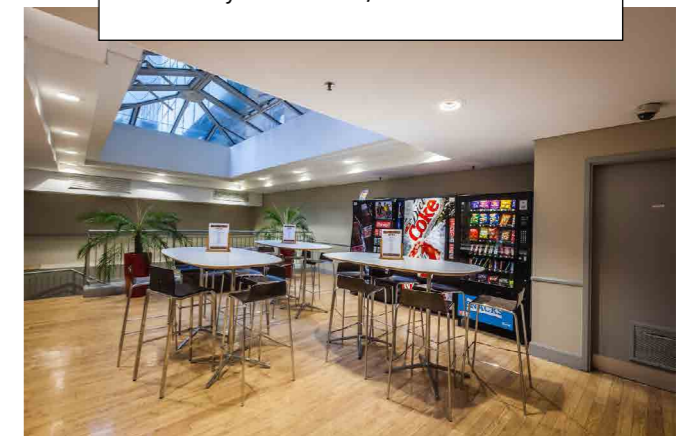
On-campus Gym

Based across two sites on campus the LSESU Gym offers a wide variety of facilities to provide students with an enhanced fitness experience including the Endurance Series Cardio Range, functional training area and brand-new strength and conditioning suite.



"Some of my best memories at LSE were made with my friends at Sidney Webb House. The facilities are clean, and the staff are friendly and approachable. It was one of the highlights of my entire trip, and I highly recommend it to future incoming students."

Richelle Miao, USA/China
University of California, Santa Cruz





**LSE is
ranked 1st
in the UK**

The Times and Sunday Times Good University Guide 2026

Campus Life

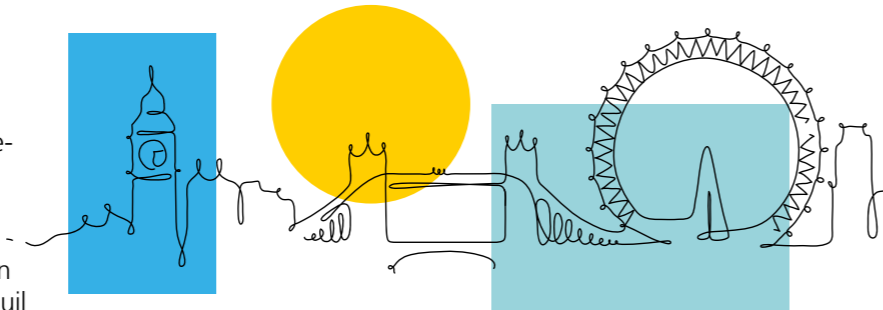
At Summer School you benefit from the same first-class facilities and services as a full-time LSE student.

LSE is based on one campus and many of the streets around us are pedestrianised, making the campus feel like a real community.

We are in central London near to the River Thames, Covent Garden and Theatreland, the Royal Courts of Justice and many other London sights.

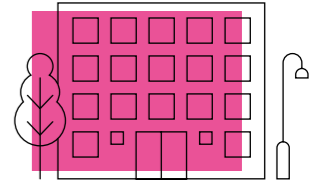
From the bustling Saw Swee Hock Student Centre with its student pub, nightclub and roof terrace, to the Marshall Building's state-of-the-art classrooms and study areas, we know you'll feel right at home here.

And at the heart of campus sits Lincoln's Inn Fields gardens which have provided a tranquil oasis in the middle of the city since 1445.



"LSE's campus felt like a mini city inside London, which was so cool and different from what I was used to. The facilities were incredible, from lecture rooms to sports halls - you'll have everything you could need."

Fernando Rodriguez-Acosta, Spain
Schiller International University - Heidelberg Campus



Making the most of our campus is all part of getting the best learning experience and an authentic taste of life in central London.

Work out with discounted LSE Gym membership, maximise your learning in fully equipped modern teaching spaces, and relax and meet with new friends in the student bars and cafés.

As an LSE student, you will have full access to our iconic library which offers excellent resources, long opening hours, and the perfect study environment.



Social Programme

Our bespoke social programme will help you make life-long friends and build networks that span continents. The varied social programme will be your starting point to making friends and discovering London, one of the world's most diverse and exhilarating cities.

Make the most of our free and ticketed events and our recommendations of things to do around town, from sampling the thriving food scene to discovering unique events!

Welcome Event

Walking Tours

West End
Theatre Trips

Trips to Iconic
UK Cities

Thames River
Boat Party

Leaving Party

Pub Quiz

Summer Fayre

Please note that we cannot guarantee that all events will run in every session.



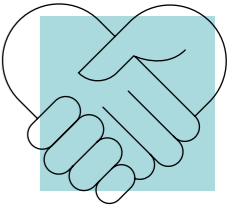
"Take advantage of the social events because this is a terrific way to meet individuals from many walks of life."

Raquel Beji, Portugal
Catolica Lisbon School of
Business and Economics



"The Boat Party is an absolute highlight of Summer School! Getting to dress up, dance, and take photos on the River Thames at sunset with all of your new friends makes for an unforgettable experience!"

Mason Sattler, USA
State University of New York, Binghamton



Spark

Professional Skills

By LSE Summer School ■

At LSE Summer School, we don't only offer a world-class education, we also offer you world-class extracurricular activities to enhance your personal and professional development alongside your academic growth.

Spark is a programme of exciting events, bootcamps, panels, pitches and workshops that helps students enhance their professional skills for today's rapidly developing workplace.

Working in collaboration with LSE Careers, Digital Skills Lab, LSE LIFE and the School's entrepreneurship hub, LSE Generate, you will gain access to some of the most dynamic and exciting industry experts and business leaders in the LSE ecosystem.

Spark offers you a unique and detailed insight into how to make yourself stand out in the professional world.

Earn a digital badge

Based on your attendance at Spark events, you can earn a digital badge to showcase your professional skills to potential employers. Once completed you can download your badge and display it on your LinkedIn page, your email signature or add it to the skills and achievement section of your CV.



“This is the ideal moment to start building the courage, aptitudes, agility and resilience – the innovation and entrepreneurial mindset – that will equip you to navigate the ups and downs ahead.”

L.J. Silverman
Head of LSE Generate

Digital Skills

Digital skills are increasingly important in today's workplace, as more industries become dependent on technology and digital tools. Learn how to use technology to complete tasks, solve problems, communicate effectively and capture business opportunity.

Entrepreneurship

We focus on developing skills not only for those looking to start a business but anyone who would like to develop their entrepreneurial mindset – a skill prized by many graduate employers.

Industry Insights

Gain a deeper understanding of individual industries, their current trends, challenges, and opportunities. Understand your target industry, its dynamics and how to be successful in it.

Job Search Skills

Learn how to succeed in today's rapidly fluctuating job market. You will be more effective and successful in your job search and increase your chances of finding a job that is a perfect fit!

Postgraduate Study

Postgraduate study skills explore the abilities and strategies that are necessary to effectively apply for a postgraduate programme, and to perform effectively when you start the course.

Wellbeing

Individuals who practice healthy wellbeing techniques often improve productivity, have greater job satisfaction, and are happier in work and life. Sessions on mindfulness, stress management and how to worry effectively will equip you to handle any situation and achieve a balanced life.

Spark events in 2025 included:

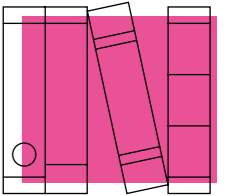
- The Value of Networking & LinkedIn
- Postgraduate Study at LSE
- Your Future Job Search: Planning & Strategy
- Your CV: Maximising effectiveness
- Write Essays that LSE Markers Want to Read
- Language for Negotiation
- Improv Workshops
- Female Founders Evening
- Career Development Workshops

LSE Generate is recognised as the top university start-up hub in the UK by the Financial Times, Statista, and Sifted.

LSE Generate is ranked among the top ten leading start-up hubs in Europe

“Standout graduates can clearly articulate how the skills they have developed during their studies can translate into the workplace. Being able to knit together an interesting narrative that illustrates values, aspirations and what you can bring to the workplace will help prospective employers get a sense of who you are and the value you will bring to their team.”

Anne Clinton
Director of LSE Careers



118 NATIONALITIES REPRESENTED

MEET THE WORLD

"LSE was an absolutely unique experience. I learned so much, both academically and about myself, and made so many friends there. It really does provide a world-class education in a world-class location."



Joanna Wang, USA
Harvard University



"An epic summer that will stay with me forever!"

Leopold Scholz, Austria
Vienna University of Economics and Business

"Attending LSE Summer School was a rare mix of intense yet pricelessly meaningful and unforgettable experiences that broadened my knowledge and global network."

Fred Muthui Mamicha, Kenya
Rose Bruford College



"Choosing to spend my summer at LSE was one of the best decisions I have ever made. I walked away with an improved worldview, an incredible breadth of knowledge and countless priceless memories with new friends - I'd recommend Summer School without hesitation!"

Bella Courtney, Australia
The University of Adelaide



"It's awesome to learn alongside students who are so different but so alike at the same time."

Luis Omar Guerrero, Mexico
Tecnológico de Monterrey



Learn and explore with students from all over the globe in one of the world's most exhilarating and cosmopolitan cities.





A huge range of courses are available, all taught and examined to LSE's rigorous academic standards.

Academic Information

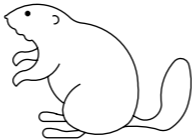
You can choose from an exciting range of courses across the wide spectrum of LSE's world-class teaching, all delivered at our central London campus. Some of our most popular courses run more than once to give students more flexibility.

Session One
22 June - 10 July

Session Two
13 July - 31 July

Session Three
3 August - 21 August

Visit lse.ac.uk/summer-school and join our mailing list for updates.



Many of our students attend two or more sessions and take advantage of reduced fees on their 2nd and 3rd courses.

Which course is right for you?



100 level courses

Equivalent to first year undergraduate courses. There are no specific prerequisites in your own subject, but you may require some mathematics or other related subjects. The minimum requirement for taking these courses is to have an offer of a place at university, and additional evidence of academic ability may also be required.



200 level courses

Equivalent to second year undergraduate courses. They have prerequisites in the form of university level introductory courses in the same, or a closely related subject.



300 level courses

Advanced and equivalent to final year undergraduate or first year graduate courses. They have prerequisites of university level intermediate courses.



"Summer School gives you the opportunity to experience the quality of LSE: you'll learn from world-class professors and experience fascinating courses, all taught to the highest-standard."

Francesco Mazzei, Italy
Università di Bologna



Accounting



100 LEVEL

- AC101: Management Accounting and Data-Driven Decision Making
- AC110: Principles of Accounting



200 LEVEL

- AC200: Sustainability Reporting in Capital Markets
- AC202: Corporate Fraud and Accountability: Principles and Practices
- AC210: Financial Statement Analysis for Investment Banking and Asset Management
- AC215: Business Analysis and Valuation



Courses are subject to change - check the LSE Summer School website for the latest course information.

Business and Management



100 LEVEL

- MG101: Marketing
- MG103: Consumer Behaviour: Behavioural Fundamentals for Marketing and Management
- MG106: Strategic Management
- MG107: Management Analytics in the Age of Big Data
- MG110: The Science and Art of Decision Making
- MG111: AI for Business: Management, Strategy and Governance
- MG112: Entrepreneurial Strategy: Designing and Launching Ventures
- MG114: HRM and the Future of Work: Adapting to Change
- MG130: Management of Organisations
- MG133: Power, Status and Conflict in Organisations



200 LEVEL

- MG200: Leading Organisational Change in the Age of Generative AI
- MG201: Brand Strategy
- MG203: Industrial Policy: Leading the Green and Digital Transitions
- MG204: Leadership in Organisations
- MG206: Business Strategy in International and Emerging Markets
- MG209: Bargaining and Negotiation: Interests, Information, Strategy and Power
- MG250: Management and Economics of Digital Innovation

Economics



100 LEVEL

- EC101: Introductory Microeconomics
- EC102: Introductory Macroeconomics
- EC103: The Economic History of Inequality
- EC104: The Wealth (and Poverty) of Nations: Global Economic Development Past and Present



200 LEVEL

- EC200: Introduction to Behavioural Economics
- EC201: Intermediate Microeconomics
- EC202: Intermediate Macroeconomics
- EC203: Real Estate Economics and Finance
- EC204: Financial Markets and the Global Economy: the History of Bubbles, Crashes and Inflation
- EC210: Inequality and Poverty Analysis
- EC212: Introduction to Econometrics
- EC235: Economics of European Integration
- EC240: Environmental Economics and Sustainable Development
- EC260: The Political Economy of Public Policy
- EC270: Public Finance: Designing Effective Government Policy



300 LEVEL

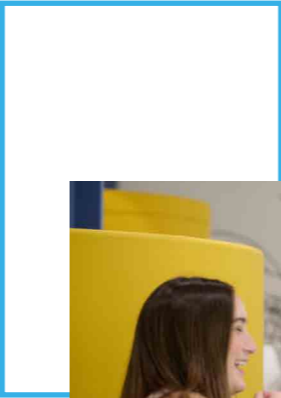
- EC307: Development Economics
- EC312: Advanced Econometrics
- EC320: Applied Econometrics and Big Data
- EC351: International Economics

English Language



100 LEVEL

- LN101: Preparatory English (1 week before session one - in person only)
- LN102: Preparatory English (1 week before session two - in person only)
- LN103: Preparatory English (1 week before session three - in person only)



Courses are subject to change - check the LSE Summer School website for the latest course information.

Finance



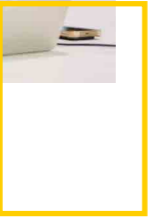
200 LEVEL

- FM200: Fundraising for Startups
- FM201: Sustainable Finance and Impact Investing
- FM202: Analysis and Management of Financial Risk
- FM225: Fixed Income Securities, Debt Markets and the Macro Economy
- FM230: Alternative Investments
- FM250: Finance



300 LEVEL

- FM350: Advanced Corporate Finance
- FM360: Options, Futures and Other Financial Derivatives



International Relations, Government and Society



100 LEVEL

- IR100: Great Thinkers and Pivotal Leaders: Shaping the Global Order
- IR102: Comparative Political Economy: Capitalism, Democracy, and Inequality
- IR104: Environment and Society: Science, Policy and Action
- IR105: Understanding Foreign Policy: the Diplomacy of War, Profit and Justice
- IR110: Foundations of Psychological Science
- IR112: Gender, Culture and Policy
- IR114: Power, Inequality and Identity: Understanding Contemporary Societies
- IR115: Culture and Globalisation
- IR116: Food, Culture and Identity
- IR117: The Future of Democracy
- IR120: Trade, Development and the Environment
- IR130: War, Power and Morality: Divisive Debates and Contentious Conflicts
- IR140: Media and Communications in an Age of Crisis
- IR160: Conflict and Power in the Contemporary Middle East



200 LEVEL

- IR201: Power Shift: The West, the BRICS and The Crisis of the Liberal International Order?
- IR204: International Migration: Power, Policy and Lived Realities
- IR207: Development in the International Political Economy

International Relations, Government and Society



200 LEVEL

- IR209:** International Political Economy: States and Markets in the 21st Century
- IR211:** America as a Global Power: FDR to Trump
- IR214:** Public Policy: Change, Administration and Analysis
- IR218:** Global Health: Science, Politics and Development
- IR222:** From Cyberwar to Killer Robots: Emerging Technology and International Security
- IR223:** Women's Rights Through the Ages: From First Wave to #MeToo
- IR224:** Happiness and Policy
- IR225:** Understanding China's Rise: Global and Local Perspectives
- IR226:** Applied Diplomacy: Strategy, Influence and Negotiating
- IR227:** Politics of Change: Governing Social Transformation
- IR245:** International Journalism and Society: The Role of the Media in the Modern World



Courses are subject to change - check the LSE Summer School website for the latest course information.

Law



100 LEVEL

- LL100:** European Union Law
- LL102:** Introduction to International Human Rights: Theory, Law and Practice
- LL105:** International Law: Contemporary Issues
- LL110:** Tax, Justice and the Economy
- LL135:** Introduction to Corporate Law and Governance



200 LEVEL

- LL200:** Competition Law and Policy: Contemporary Challenges in a Global Market
- LL201:** Intellectual Property Law
- LL202:** Commercial Law
- LL203:** International Commercial Litigation and Arbitration
- LL204:** The Foundations of AI Law and Regulation
- LL206:** Introduction to Financial Regulation
- LL209:** Law, Society and Morality: Contemporary Controversies in the Courts
- LL214:** Applied AI and Law
- LL215:** New Frontiers in Law Enforcement, Crime and Punishment
- LL235:** International Mergers and Acquisitions: Law and Practice



300 LEVEL

- LL300:** Resolving Commercial Disputes: Negotiation, Mediation, and Litigation Strategy
- LL301:** Corporate Finance Law

Data Science, AI and Research Methods



100 LEVEL

- ME102:** The Ethics of Data and Artificial Intelligence
- ME116:** Introduction to Statistics: Understanding the World through Data
- ME117:** Probability and Statistics for Economics and Econometrics



200 LEVEL

- ME200:** Computational Methods in Financial Mathematics
- ME204:** Data Engineering for the Social World
- ME206:** Mastering Strategy with Game Theory



300 LEVEL

- ME306:** Real Analysis
- ME314:** Introduction to Data Science and Machine Learning
- ME315:** Machine Learning in Practice
- ME317:** Statistical Methods for Risk Management
- ME319:** Machine Learning and Stochastic Simulation: Applications for Finance, Risk Management and Insurance
- ME324:** Artificial Intelligence and Deep Learning

Applying to Summer School



Entry requirements

Grades: Minimum recommended GPA 3.3/ B+

Prerequisites: 200 and 300 level courses will have conditions of entry. Please check online for details.

Is English your second language?

Applicants need to be proficient in the use of English. If you have had previous university level instruction in English, or live in a country where English is a main language, you need not submit a proficiency certificate. Otherwise you will need:

Certificate Required Score

TOEFL iBT 107 or above (including 25 in each component)
(including Home and Paper Editions)

Academic IELTS 7.0 or above (including 7 in all components)

C1 Advanced With grade B or better or 185 points overall and a minimum of 185 points in each individual component

CET-4 Students who have a CET score of 470 or more, may be admitted if they also attend a one-week LSE Preparatory English course immediately prior to taking their chosen Summer School course

Preparatory English

Preparatory English courses will take place in the week prior to each session and are tailored specifically for international students studying at Summer School. These courses will take place on LSE's campus.

For details of other accepted certificates, please visit: lse.ac.uk/summer-school



Application and fees

How to apply: Apply online. Popular courses and LSE Residences do fill up quickly, so we recommend that you apply as soon as possible.

How to support your application: You will be asked to provide a copy of your university transcript (if available). If English is not your first language you should include appropriate evidence of English proficiency.

Students taking more than one course will be eligible for discounted rates as outlined on our website.

Fees: Check online for latest fees at lse.ac.uk/summer-school

*Student rate applies to full-time students who are currently enrolled at a university or college anywhere in the world.

A non-refundable £60 application fee must be paid when submitting your application.

Please see lse.ac.uk/summer-school for full tuition fees and terms and conditions.





Programme delivery

Duration: Three weeks (six or nine weeks if attending two or three sessions).

Teaching time: A minimum of 54 hours; Lectures: 36 hours; Classes: 18 hours. (Some courses vary). Recommended self-study: 2-3 hours per day.

Credit and assessment

Credit: Generally courses receive three or four credits in the US system, or 7.5 ECTS in the European system. Please check with your home institution.

Assessment: Two written exams, or a final exam and assessed work.*

Course equivalence: Each course is broadly equivalent to one semester from an undergraduate degree.

* Examinations are not compulsory, but they are encouraged and may be necessary for students requiring credit.

Student Support

- Summer School Team available: Monday to Friday, 9:30am - 5:30pm for all enquiries
- Application support and visa letters
- Summer School Office – in-person support during the programme
- Study and wellbeing advice sessions
- IT help desk
- Post-programme documentation

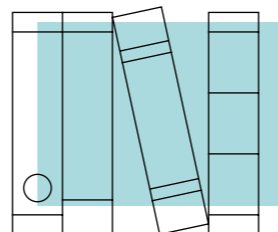
Contact Us:

Tel: +44 (0)20 7955 7227
Email: summer.school@lse.ac.uk



Academic Director's Scholarships

A limited number of scholarships will be available. Please visit our webpage for the latest information: <https://www.lse.ac.uk/study-at-lse/summer-schools/summer-school/academic-directors-scholarships>

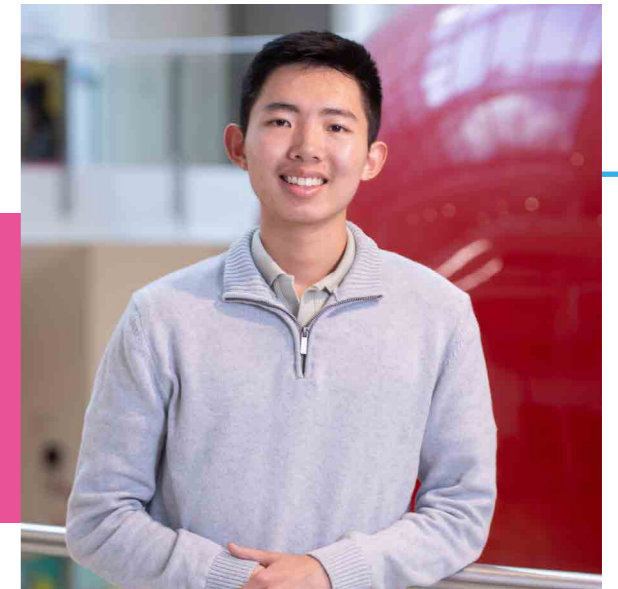


“The LSE Summer School was a once in a lifetime experience to learn from world-class academics, whilst experiencing the best of London with people you’ll call friends for life! At LSE, I realised how much potential I had to change the world.”

Lucas Ma, Australia

The University of Sydney

Awarded an Academic Director's Scholarship in the category of Responsible Leadership



For course details and fees visit:

lse.ac.uk/summer-school and join our mailing list for updates.

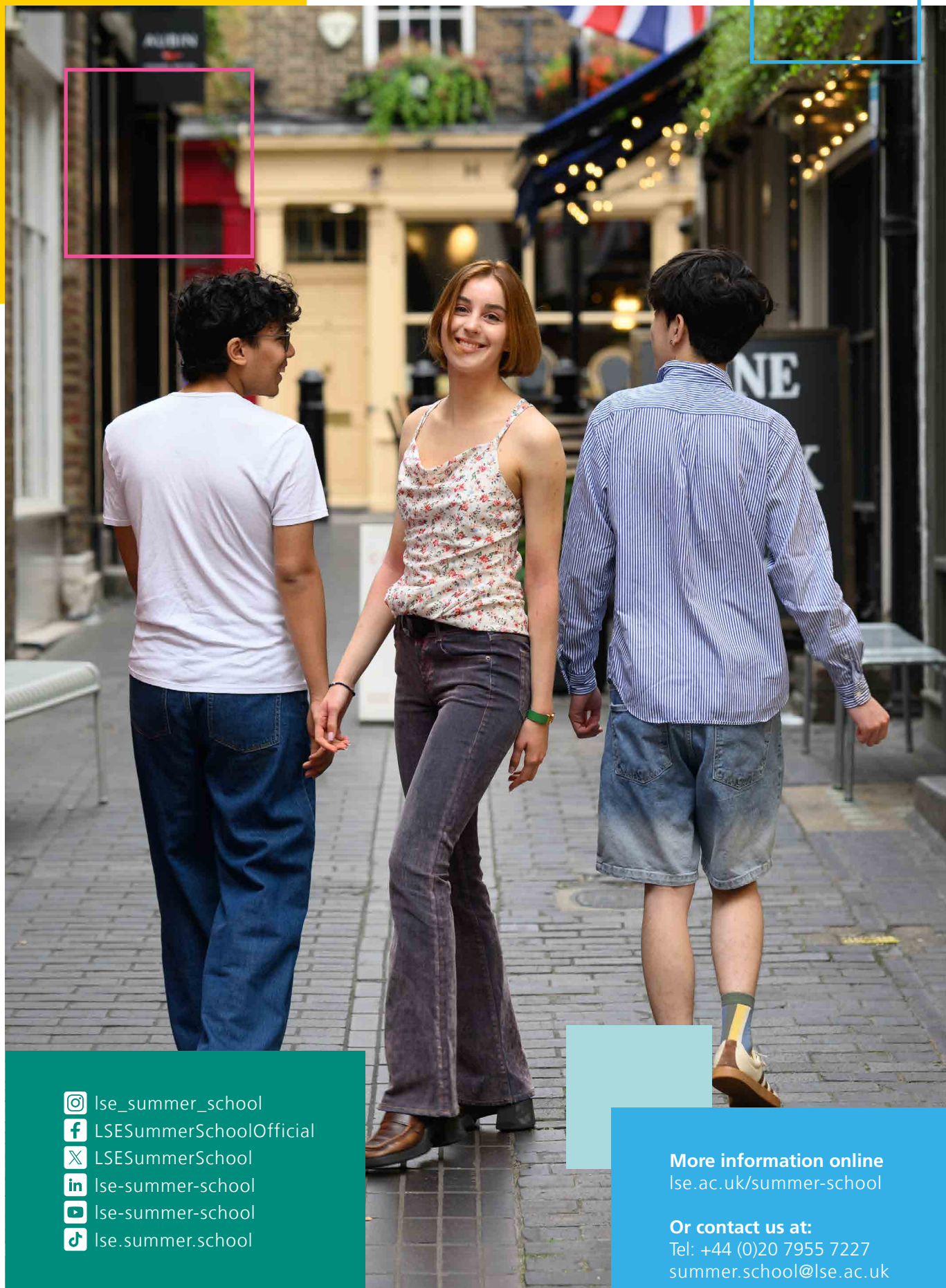
Cancellation of courses







Occasionally it is necessary to cancel or postpone courses. Should a course be subject to a major change, applicants will be offered the option to either transfer to another course or receive a full refund. Any alterations to the programme will be made by the first week of June 2026. If you are coming from abroad, you are strongly advised to take out comprehensive travel insurance for the duration of your stay.

Equality and diversity

To uphold the School's commitment to equality of respect and opportunity, as set out in the Ethics Code (search 'Ethics Code' on the LSE homepage), we will treat all people with dignity and respect, and ensure that no-one will be treated less favourably because of their role at the School, age, disability, gender (including gender identity), race, religion or belief, sexual orientation, marriage and civil partnership, pregnancy and maternity and

social and economic background. For details of the School's work on enhancing its equality practices to reflect the requirements of the Equality Act 2010, please see the EDI website (search 'EDI Policy Statement on the LSE homepage').



 lse_summer_school
 LSESummerSchoolOfficial
 LSESummerSchool
 lse-summer-school
 lse-summer-school
 lse.summer.school

More information online
lse.ac.uk/summer-school

Or contact us at:
Tel: +44 (0)20 7955 7227
summer.school@lse.ac.uk