

Key research questions

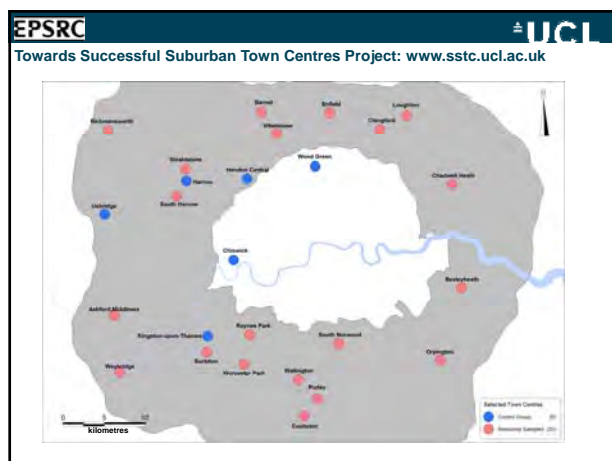
- How does the urban design of suburbs contribute to their success?
- Is the adaptability of these places contributing to their sustaining over time?
- What is the influence of social interactions and spatial movement on the economic vitality and adaptability of places?

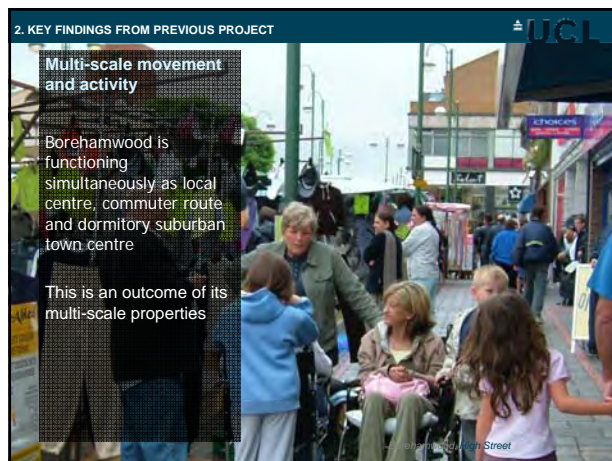
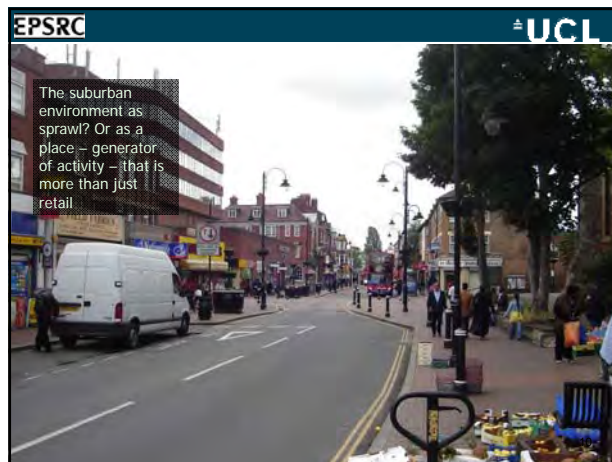
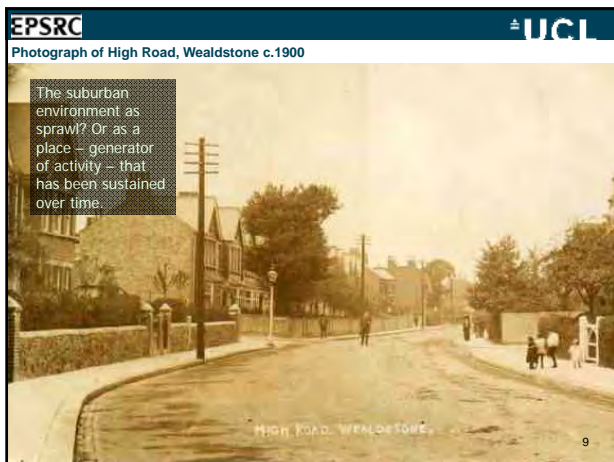
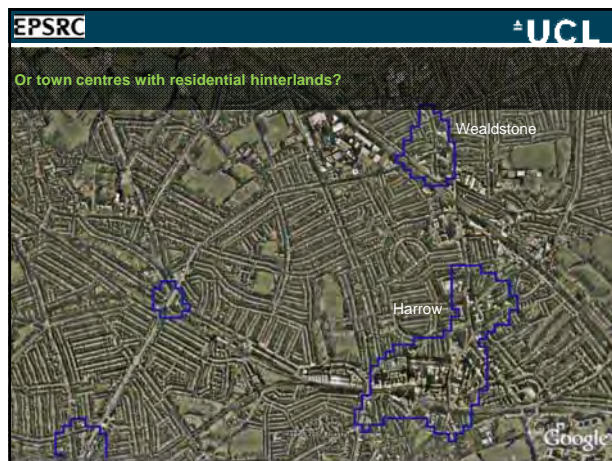
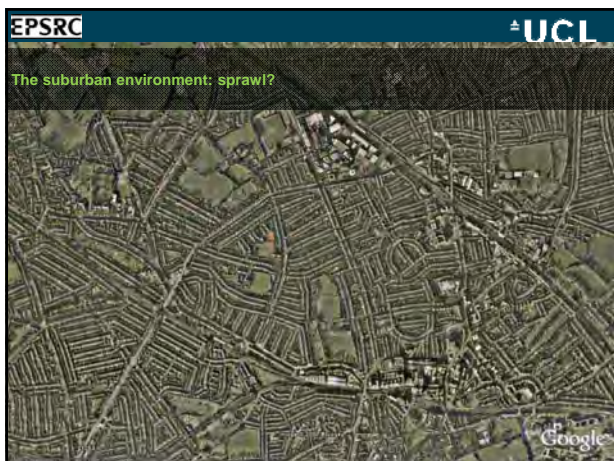
1. DEFINING SUBURBS

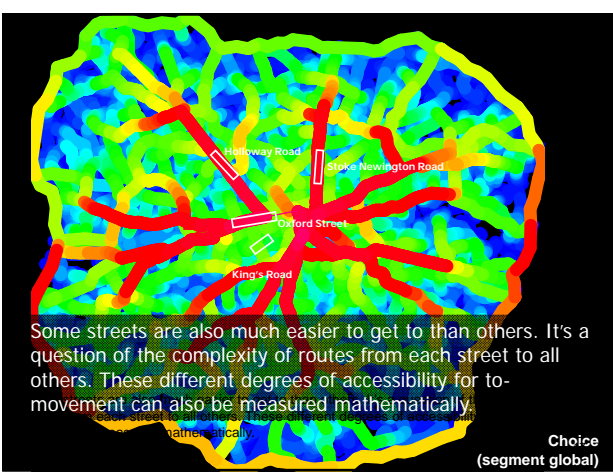
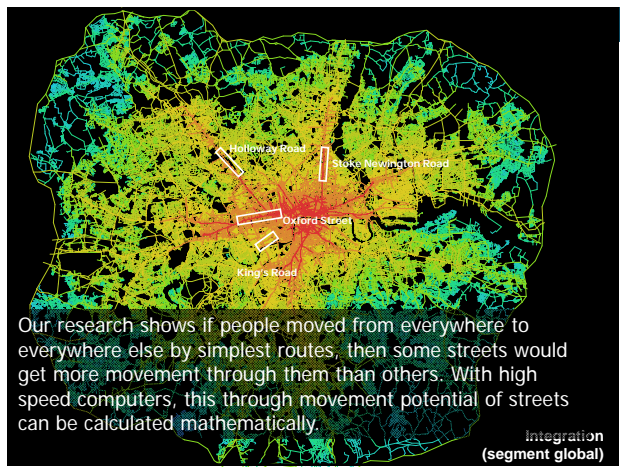
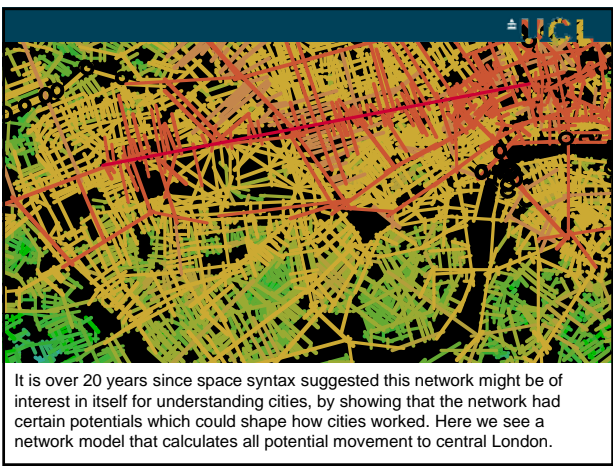
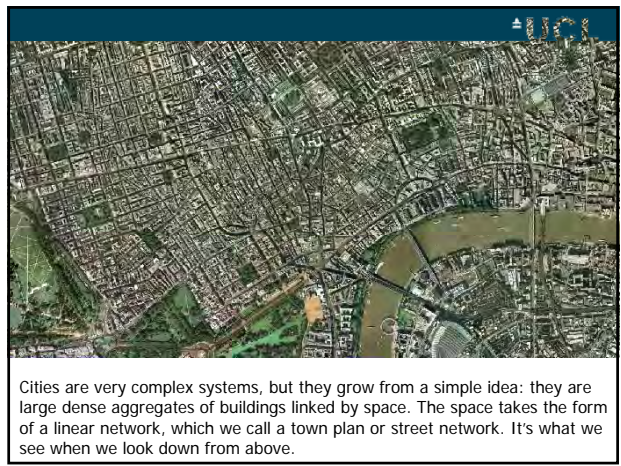
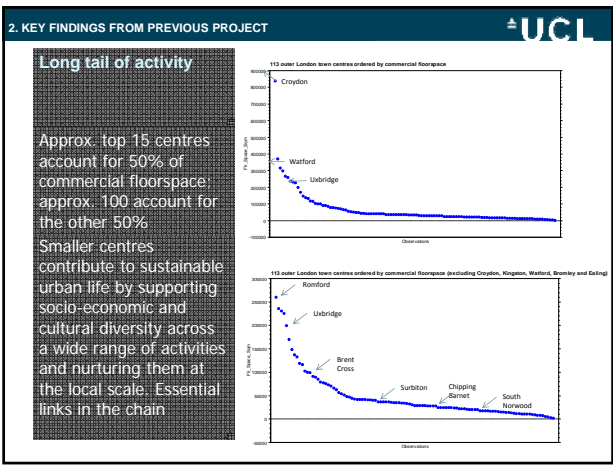
Defining suburbs

- The suburbs are not a recent innovation.
- The stone carving of the ancient Persian city of Madaktu shows suburban domiciles situated among the palm trees outside the city walls.
- Peter Ackroyd has also commented of London's suburbs that they are "as old as the city itself" (*London: The Biography*, 2000, 727).


Relief of the Elamite city of Madaktu, Persia. The town itself, with its towered walls and its suburbs in which every house is sheltered by a date tree, is figured in the centre (668-627 BCE). Source: The Project Gutenberg EBook of 'A History of Art in Chaldaea & Assyria', v. 1, by Georges Perrot and Charles Chipiez, page 332









Land-use and choice
Small-scale spatial model reveals long-tail of activity, longevity of non-residential presence in the area




Choice radius 400




Land-use and choice
Distribution of uses varies across location and scale of potential journey.




Choice radius 800



Land-use and choice
A given street or area may be central at a local scale but relatively segregated at a larger scale.



Choice radius 1600




EPSRC

Adaptable suburbs 2010-14

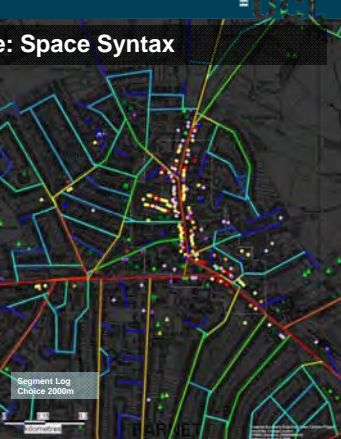
3. RESEARCH PROGRAMME:

Research programme: Space Syntax



Residents 74% (n=89);
Median route length: 982m

Non Residents 26% (n=24);
Median route length: 389m



Segment Log
Choice 2699m

Research programme: Business ethnography



EPSRC UCL

Research programme: qualitative GIS

THE GREEN Mapping Sustainable Communities in Hackney, London

Back to Justice in the Green

Justice in the green Community Video

justice in the Green is an action and reflection on the surrounding communities, in it

generation and sharing of (red) green spaces by the

Map Legend

- All Layers
- Community Facilities
- Community Video
- Community Views
- Development Projects
- Events
- Green Space and Natural Environment
- Historical Data
- Hotspots
- Organisations
- Transport

EPSRC UCL

Research programme: quantitative GIS

HIGH BARNET

Area Model
ITN
OSM Roads Layer
Town Centre Boundary

EPSRC UCL

Research programme: urban history

HACKNEY

HIGH OR CHIPPING BARNET

High Barnet 1913

High Barnet 1965

EPSRC UCL

4. RESEARCH IMPACT (KNOWLEDGE TRANSFER)

EPSRC UCL

4. Research Impact (Knowledge Transfer)

- Inform social-economic policy
- Advance analytic and modelling capabilities
- Benefit government agencies, civic society and the third sector
- Raise the profile of suburbs as having a role to play in the future of urban sustainability

EPSRC UCL

Further information: <http://www.sstc.ucl.ac.uk>
 Blog: <http://uclsstc.wordpress.com/>
 Twitter: [@AdaptableSuburb](https://twitter.com/AdaptableSuburb)

5. QUESTIONS