

The governance of Economic Development in the Ile-de-France

Christian LEFEVRE,
University of
Paris, French Institute of Urban Affairs

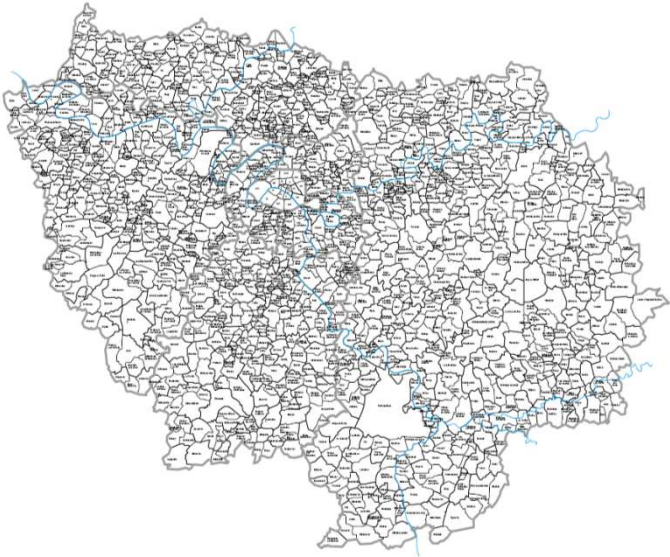
London School of Economics
London, June 23, 2008

A very fragmented system of actors

Political actors

- 1281 municipalities

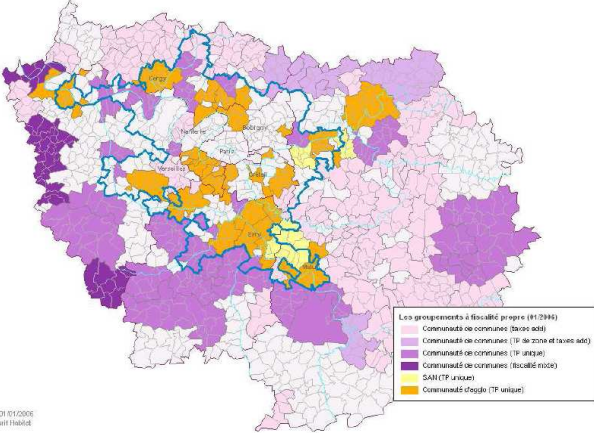
CARTE ADMINISTRATIVE DE LA REGION ILE-DE-FRANCE



- A minimum of 105 joint authorities

105 communautés

- 29 CA
- 4 SAN
- 72 CC

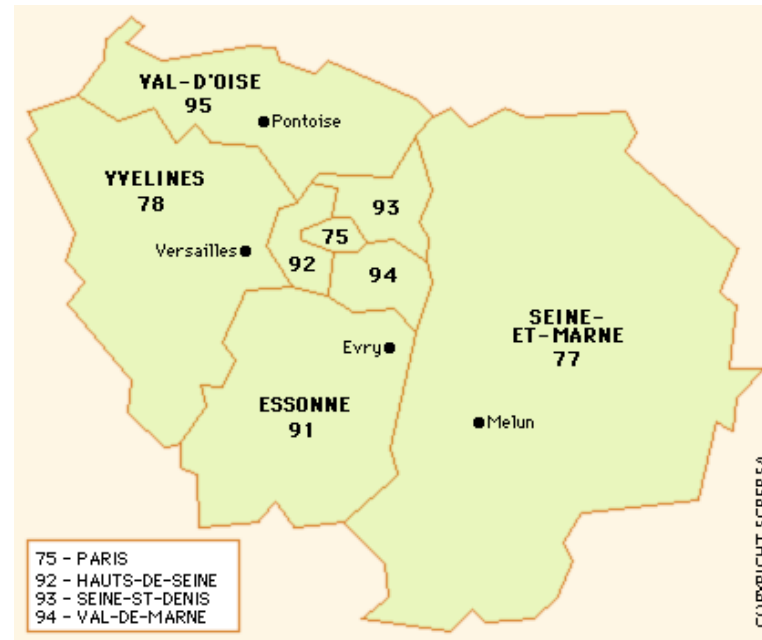


Source : IAU/IFP de ST/ODEE © IAU/IFP - Visuel Habitat

A very fragmented system of actors

Political actors

- 7 départements + Paris



- The Regional Council (CRIF)

- At least 8 development agencies (ARD, 5 départements and 3 joint authorities)

Strong presence of the State

- ❖ Regional Prefect (PRIF)
- ❖ 7 Départemental Prefects
- ❖ Many territorial structures of ministries (Education, Transport)
- ❖ Control over national public transport companies (RATP, SNCF)
- ❖ Strong involvement in Planning and Development Corporations (EPA)

A very fragmented system of actors Economic actors

-Chambers of commerce

- CCIP (1st ring)
- 3 CCIs (2nd ring)
- Regional CCI (CRCI)



A very fragmented system of actors Economic actors

❖ Business Associations:

- CGPME: Small and medium size firms
- MEDEF (Big firms):
 - territorial structures: 28 in the Ile de France
 - sectoral structures: at least 35 in the Ile de France

❖ Regional Economic and Social Council (CESR): CCis and business associations are members

A conflictual governance system showing signs of territorial splintering
conflicts between political actors

- CRIF against local governments
 - SDRIF
 - Role of RDA
- CRIF against the State
 - SDRIF
 - La Defense
 - STIF
- Paris and local governments: from indifference to cooperation
- Autonomization of some *départements*?
 - Own economic development strategy
 - own instruments

A conflictual governance system showing signs of territorial splintering
conflicts between Economic actors

- CCis against business associations: contesting the corporatist system
- CCIs against CCIs: the core-periphery debate

A conflictual governance system showing signs of territorial splintering
conflicts between political and economic actors

- Conflicts around the role of political actors in economic development
- The regional Council and Economic development: CCis and business associations against the Region
 - SDRIF
 - RDA
- No places for dialogue, debate, mediation, negotiation

Reforming the system: Impossible task?

❖ Towards a better structuring of actors?

- Towards a regional voice for economic actors: the battle around the new Regional Chamber of Commerce.
- The failed attempt by the Medef to speak with a regional voice
- Local governments and economic actors: involving economic actors in new consultative bodies?

Reforming the system: Impossible task?

- ❖ The battle over the « Grand Paris »
 - The Paris metropolitan conference: 2006-2008
 - The creation of a « Ministry for the Capital-Region »
 - Many official reports, various « solutions »...