

Ageing and a growing gap between supply of and demand for informal care?

the case of The Netherlands



Projections of informal care

- Increase in supply is enough to meet increase in demand in near future
- Ageing might increase demand for informal care
- Ageing might decrease supply of informal care

Outline

- Relation between demand and determinants
- Survey-data
- Projections of demand and supply

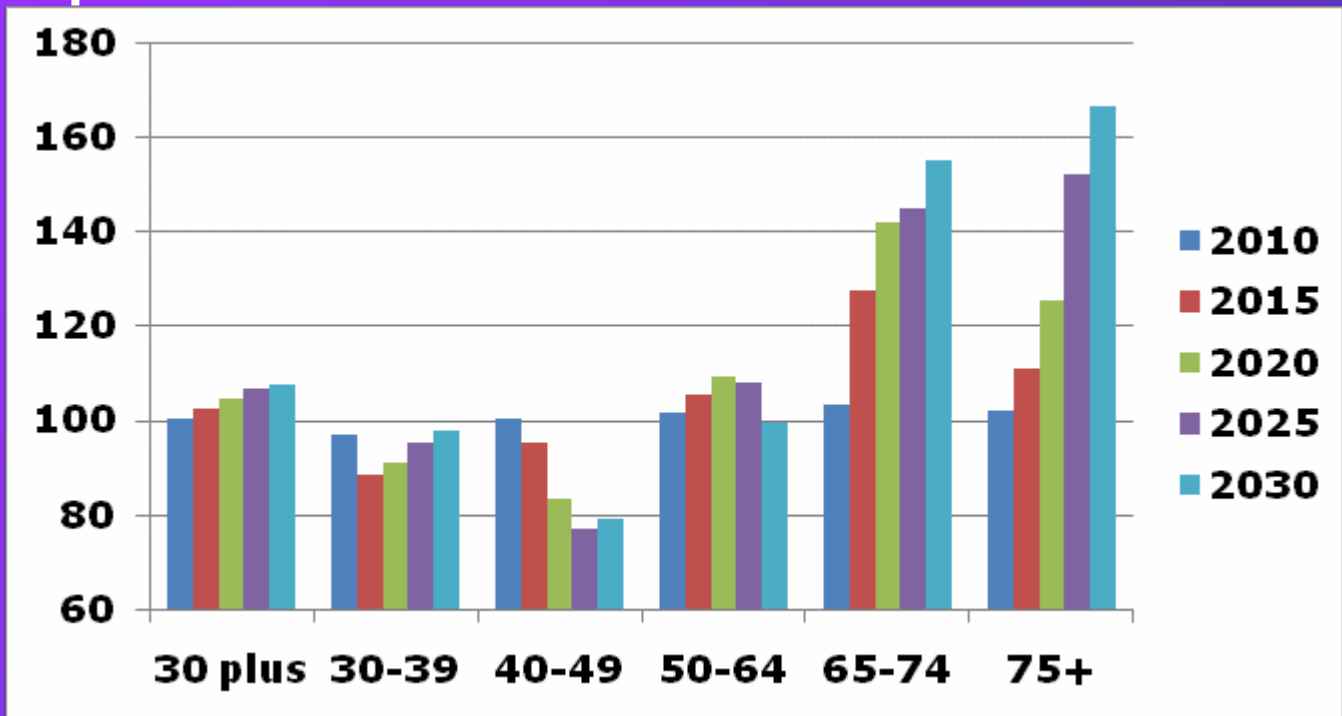
i.woittiez@scp.nl

The Netherlands Institute for Social Research SCP,
The Hague, Netherlands
www.scp.nl

Klarita Sadiraj, Michiel Ras, Joost Timmermans,
Alice de Boer



Ageing



Expected increase in demand for informal care

Expected decrease in supply of informal care

- Ageing
- Increase in labour force participation by elderly and women
- Smaller families
- Erosion of neighbourhoods

Research questions

- Will there be a shortage of supply and if so, when?
- Will the demand for informal care increase and if so, how much?
- Will the supply of informal care decrease and if so, how much?

Definitions: demand for informal care

- All individuals (handicapped or not)
- Received (proxy for demand)
- Domestic care, personal care or nursing
- In past 12 months
- From household members, family, friends, acquaintances or neighbours

Definitions: supply of informal care

- Offered help
- To ill or handicapped
- Regular and not by virtue of profession
- To household members, family, friends, acquaintances or neighbours
- Domestic care, personal care, support, supervision and administration

Differences in definitions

- Supply excludes nursing and includes support, supervision and administration
- Supply refers to ill or handicapped
- Demand refers to past 12 months
- Help is considered informal care by suppliers but not by demanders

Data: PSS2007/AVO2007 (Public Services Survey)

- 9,000 individuals, 30 years or older
- Demand and supply (not connected at microlevel)
- Demographic factors (e.g. age, gender, household composition)
- Socio-economic factors (e.g. income, education, profession, labour force participation)
- Health factors care givers and receivers (e.g. physical disabilities, various types of diseases)


Present Situation (PSS2007)

- 1.6 million caregivers
- 320.000 care demanders
- Caregivers provide 8 hours per week
- Care demanders receive 7 hours per week
- 60.000 need care but do not receive it
- Burden is high: 45% experience moderate to severe burden

Method

- Estimate the relation between supply/demand and determinants (logit)
- Project determinants, 2009-2030
- Weight data
- Combine projections of determinants with estimated coefficients from logit analysis

Determinants of supply of informal care (in odds ratios)

Female	1.5***
40-49	1.9***
50-64	1.5***
Child in household < 12	0.6**
Job (1 < 20)	0.9
Job (20-35)	0.6***
Job > 36	0.5***
Job in care	2.0***
Pseudo-R2	9.1% 

Determinants of demand for informal care (in odds ratios)

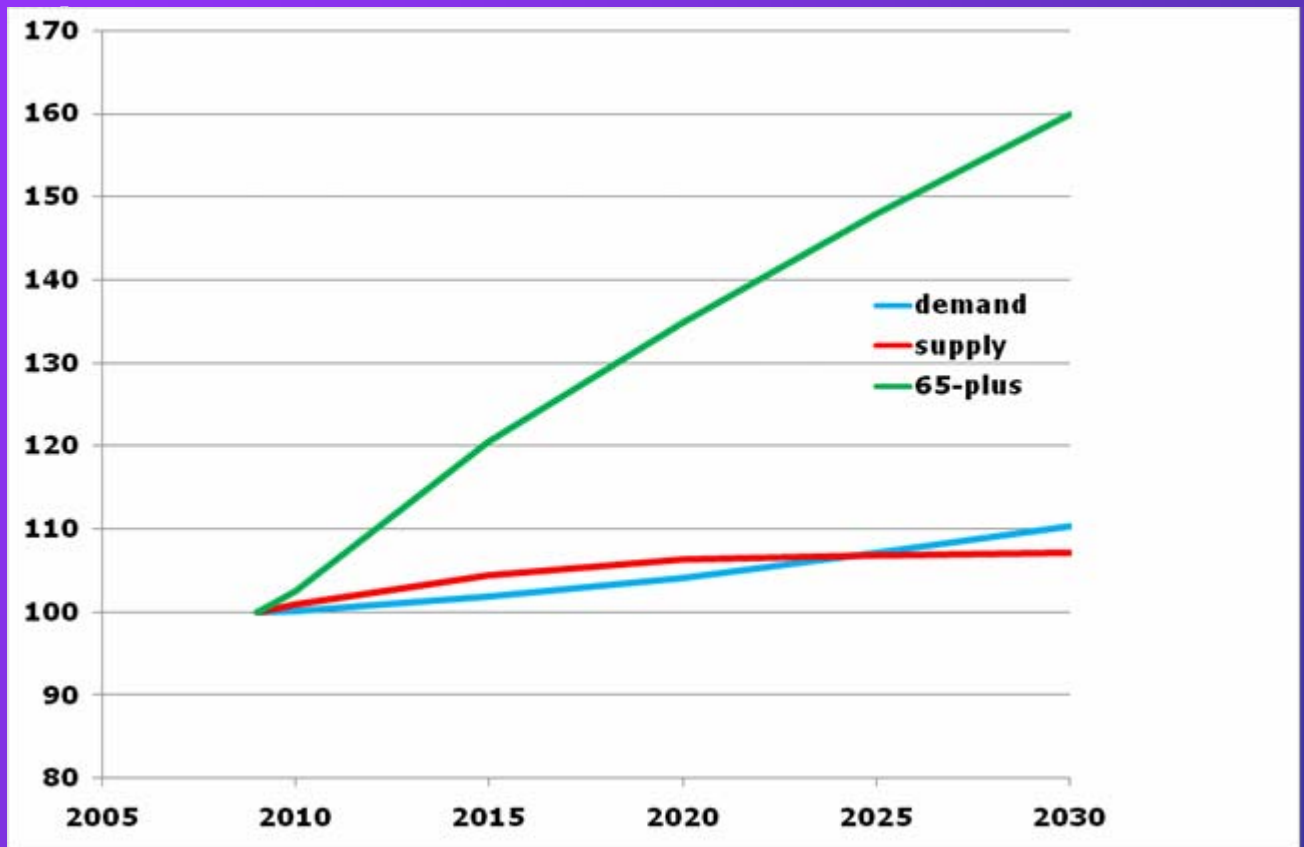
Female	2.3***
40-49	0.5**
50-64	0.3***
65-74	0.4**
75-plus	0.5***
Minor handicap	3.5**
Moderate handicap	6.9***
Severe handicap	15.9***
cancer	2.6***
Public domestic help	0.5**
Public nursing	3.2***
Pseudo-R ²	21%

Source: PSS2007

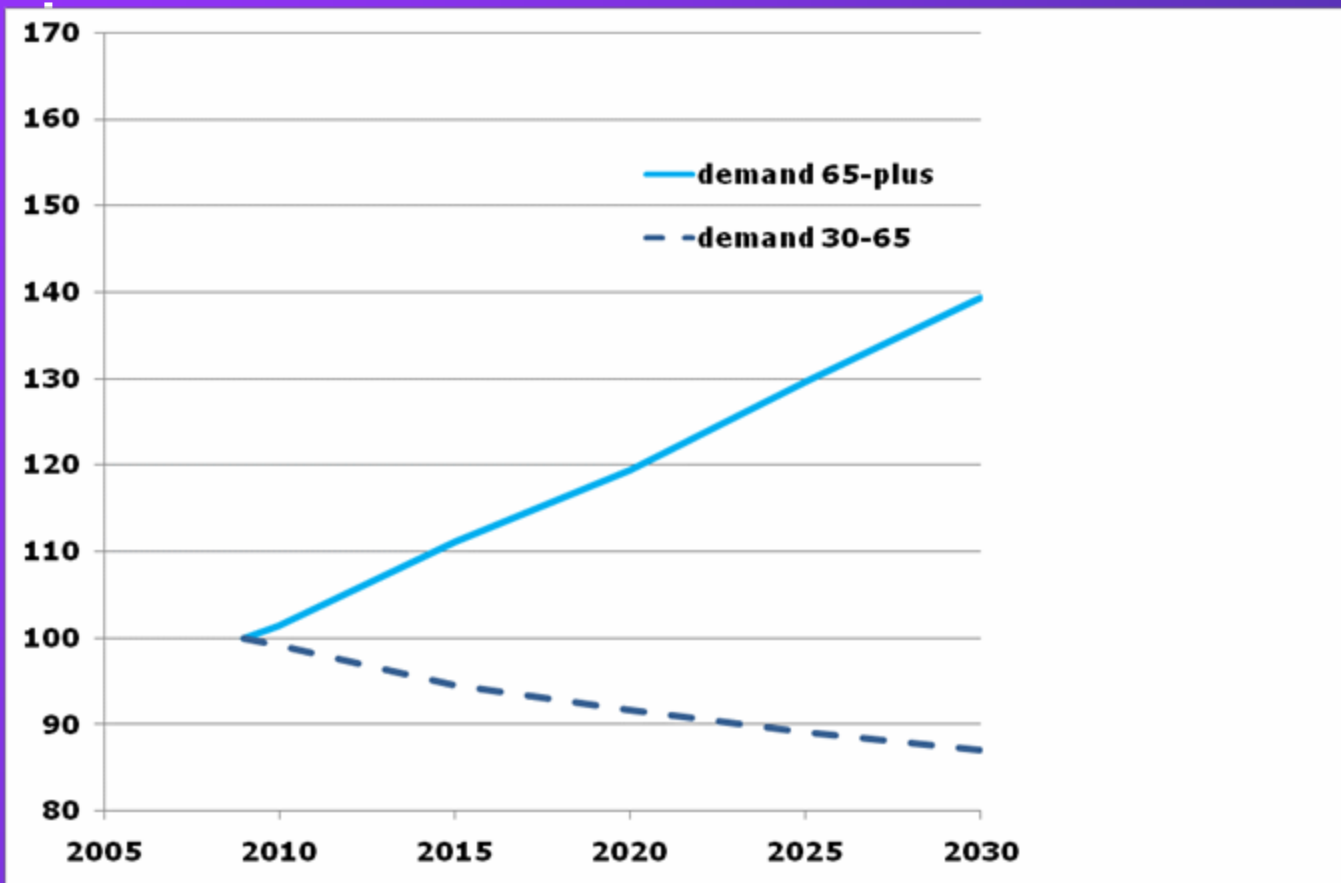
Projections of determinants 2009-2030

- Population: + 8
- Population 65-plus: +60
- Severe handicap: +19
- Cancer: +81
- Not working female : -39

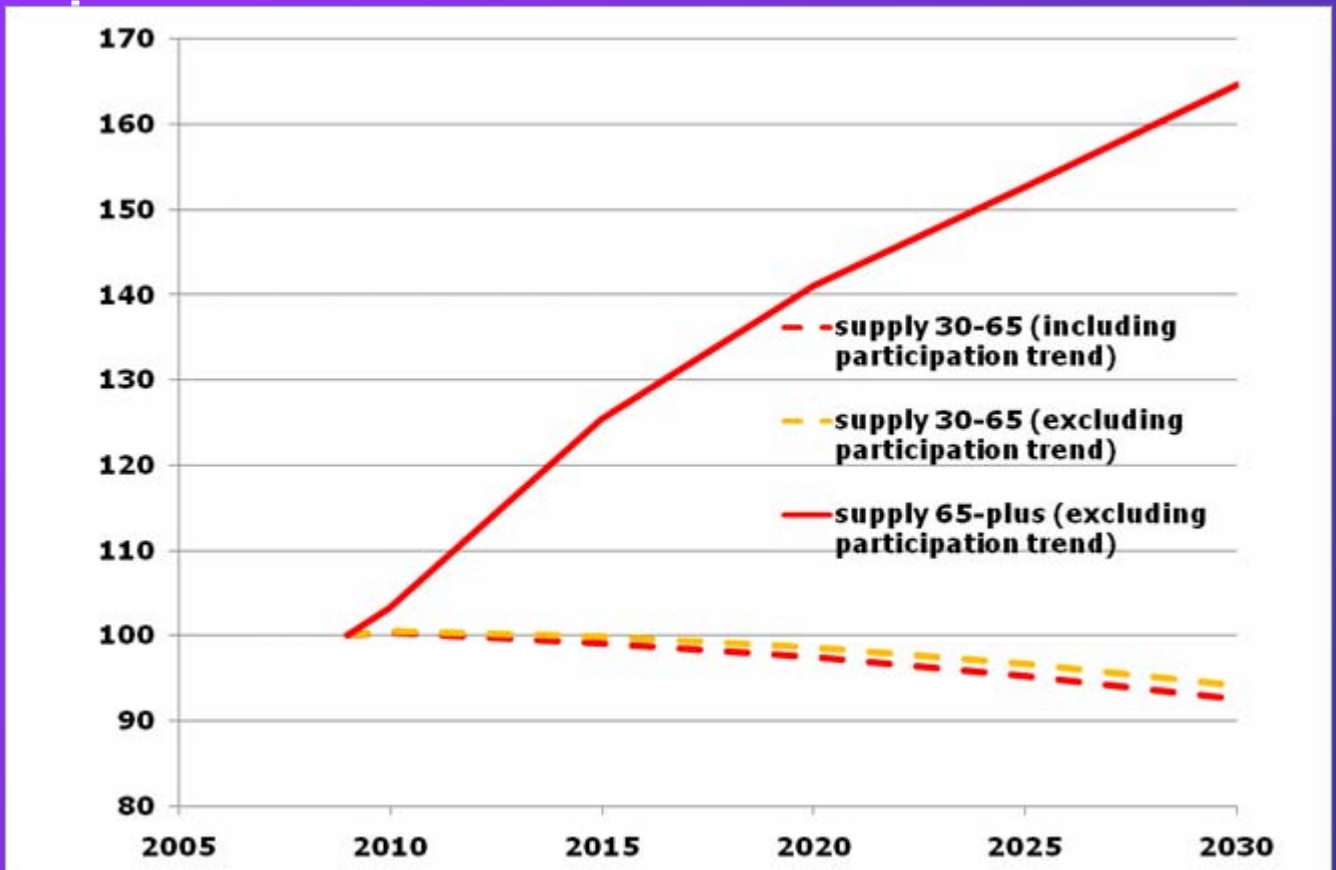
Projections of demand and supply



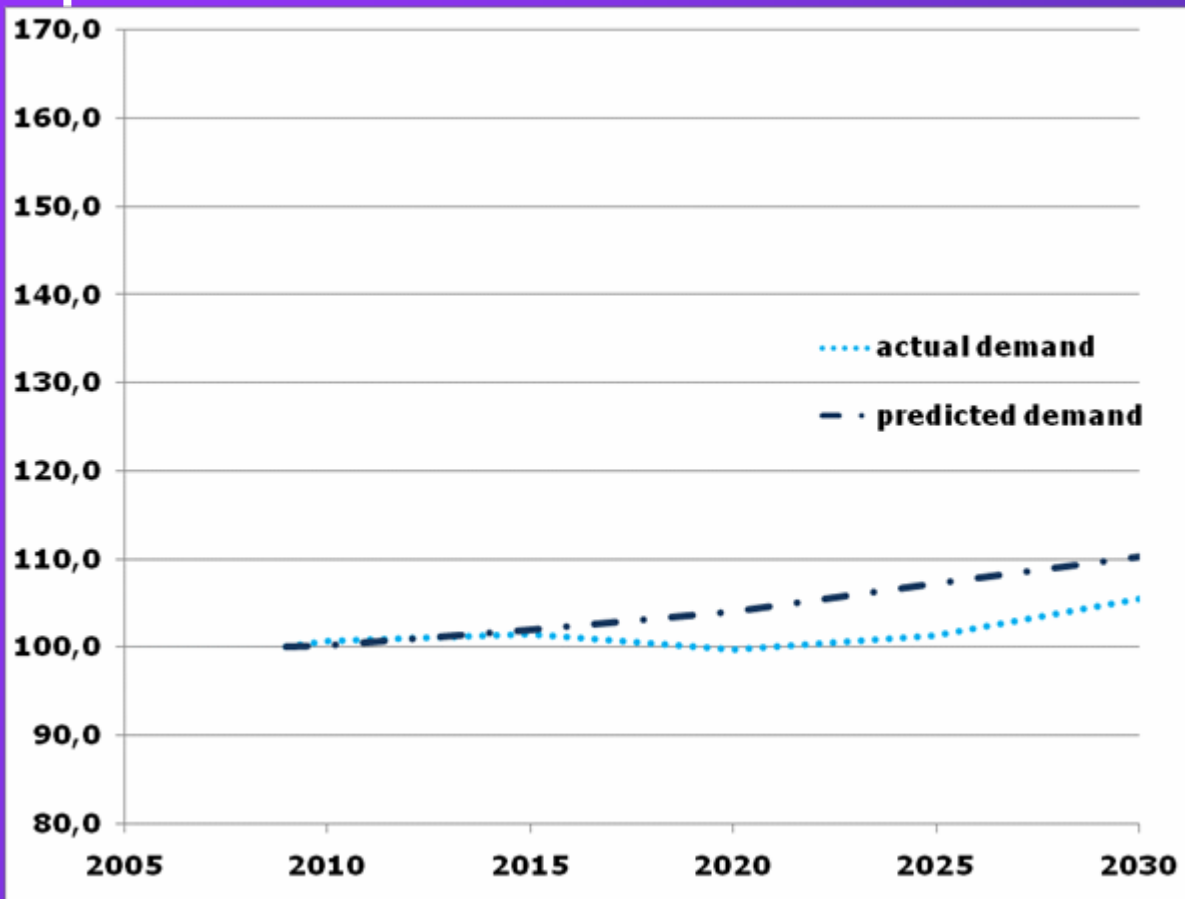
Projections of demand



Projections of supply



Projections of actual and predicted demand



Conclusions (1)

- Will the demand for informal care increase and if so how much?
 - ✓ Yes
 - ✓ 10%
 - ✓ at increasing rate

- Will the supply of informal care decrease and if so how much?
 - ✓ No
 - ✓ increases with 8%
 - ✓ at decreasing rate

Conclusions (2)

- Will there be a shortage of supply and if so, when?
 - ✓ No, not until 2025
 - ✓ Caregivers are aging

Conclusions (3)

