



THE LONDON SCHOOL  
OF ECONOMICS AND  
POLITICAL SCIENCE ■

# 2024/25 Welcome Webinar: Graduate Course Selection

Department of International Relations  
Postgraduates

Speakers: Mark Bryceland, Programmes Manager  
Matthew Gaisford St Lawrence, Programmes Coordinator  
Nick Ortiz, Programmes Coordinator

[lse.ac.uk/international-relations](https://lse.ac.uk/international-relations)

@LSEIRDept



Department of International Relations ■

## Presentation overview

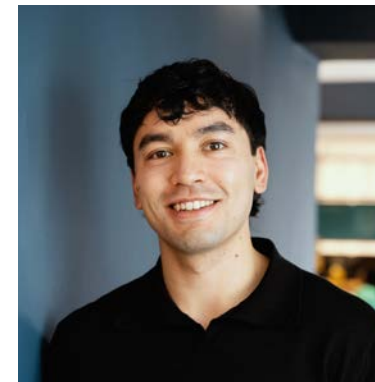
1. Introduction: MSc Programmes Staff
2. Graduate Course Selection Timeline
3. Programme Regulations and Course Guides
4. Graduate Course Selection Introduction
5. Useful Resources
6. Part-time Students
7. Important Notes
8. Q&A

**If you have any questions that you would like us to address during the Q&A session after the presentation, you can ask via the chat function and we'll answer them at the end.**

## 1 Introductions

### MSc International Relations programmes staff

- All programmes: Mark Bryceland, Programme Manager
- MSc IR, MSc IR (Double Degree): Matthew St Lawrence, Programme Coordinator
- MSc IPE/MSc IPE (Double Degree), MSc IPE/IR (Research): Nick Ortiz, Programme Coordinator
- MSc inbox: [ir.msc@lse.ac.uk](mailto:ir.msc@lse.ac.uk)



[lse.ac.uk/international-relations](https://lse.ac.uk/international-relations)

@LSEIRDept



# 2. Graduate Course Selection Timeline

Date	Day	Time	Event	Action required from students
23/09/2024	Monday	10:00am	System is open for 'browsing'	You can try using the system, but no requests are be saved at this point
26/09/2024	Thursday	10:00am	Graduate Course Selection opens fully	<b>You should log onto LFY to start the course selection process</b>
27/09/2024	Friday	12:00pm	First Round Application Deadline for our cluster*	<b>You should ensure you submit all your requests on LFY by this date</b>
27/09/2024	Friday	12:00pm	First Round Offer Period Starts (Departments to start making offers); you will be informed of the outcome by 10am on Monday 30/09/2024.	You should review your offers on LFY
Within 48 hours of receiving an offer and before 10am Monday 25/09/2024			Deadline for students to accept or decline their offers. Once an offer is accepted, students can sign up to seminars on LFY.	<b>You MUST accept or reject offers by this time. Course offers that have not been accepted within 48 hours will automatically time out</b>
Monday 30/09/2024 – Friday 11/10/2024			Autumn Term Week 1 begins. Offers for additional spaces will be made as and when spaces become available	You should check offer updates on LFY
16/10/2024	Wednesday	5:00pm	Graduate Course Selection closes	You must be registered for all 4.0 units. You can no longer submit or change their course requests after this date.

\*Our cluster departments include: Government, European Institute, International Development, (School of Public Policy), plus the Department of Sociology

[lse.ac.uk/international-relations](https://lse.ac.uk/international-relations)

@LSEIRDept



## 3. Programme Regulations and Course Guides

LSE Calendar is where all programme regulations, course guides and academic regulations are hosted

Programme regulations provide detailed descriptions of which courses you can or must take during your programme of study

Course guides provide information on every course including teaching arrangements, academic content, assessment, readings, and survey results from past students



**Calendar: Programme Regulations, Course Guides, School and Academic Regulations**

Page contents > [Current academic session](#) | [Next academic session](#) | [Previous academic session](#)

A single resource for regulations relating to students and their study

For the 2022/2023 academic session

The Calendar is published on the LSE website for use by LSE staff and students. Its purpose is to gather together into a single resource regulations relating to students and their study.

The Calendar is a web-first resource. A limited number of print versions of the School and Academic Regulations have been generated from this online version for use by LSE staff for administrative purposes. The online version of the Calendar, which will be adjusted from time to time throughout the year, is the definitive version. In the case of differences between versions, or differences between the Calendar and other sources across the School where the information has been replicated, the online Calendar version should be considered authoritative.

**Disclaimer**

You must note however that while care has been taken to ensure that this information is up-to-date and correct, a change of circumstances since publication may cause the School to change, suspend or withdraw a course or programme of study, or change the fees that apply to it. The School will always notify the affected parties as early as practically possible and propose any viable and relevant alternative options. Note that the School will neither be liable for information that after publication becomes inaccurate or irrelevant, nor for changing, suspending or withdrawing a course or programme of study due to events outside of its control, which includes but is not limited to a lack of demand for a course or programme of study, industrial action, fire, flood or other environmental or physical damage to premises.

You must also note that places are limited on some courses and/or subject to specific



**For taught master's students**

Page contents > [Course and programme information](#) | [School and academic regulations](#)

The information contained in this section is relevant to all taught master's programmes for the 2022/23 academic year.

Information for regulations, local rules and Classification Schemes relating to students who studied at the School during 2021/22 can be found on the [Subject Regulations 2021/22 page](#). Students who studied at the School prior to 2021/22 can search for the School Regulations for their year of entry in the [Egress Academic Sessions](#).

The School reserves the right at all times to withdraw, suspend or alter particular courses and syllabuses, and to alter the level of fees. Courses are on occasion capped (limited to a maximum number of students) or subject to entry conditions requiring the approval of the course convenor. The School cannot guarantee that places on specific courses will be available.

**Course and programme information**

[Programme regulations for taught master's programmes](#)

[Programme regulations for executive programmes](#)

[Graduate course guides](#)

[Summary of 2022/23 graduate course and programme changes](#)

**School and academic regulations**

During your period of study at the School there are various regulations that apply to you:

[Regulations relating to academic study](#)

[Code of good practice for students, academic, discipline and conduct/ethics programmes, teaching, learning and assessment](#) explains the basic reciprocal obligations and responsibilities of staff and students.

[Regulations for taught master's degrees - students enrolling in or after 2008/09](#) set the 'ground rules' for your degree.

[Regulations for certificates](#) set out the 'ground rules' for your programme.

[General academic regulations for all undergraduate students enrolling in or after the 2002/01 academic year](#)

## 4. Graduate Course Selection Introduction

Within your LSE degree, you are required to complete a specified number of units of work

You need to choose **4.0 units** of courses for your degree in IR

Some courses are compulsory ('core courses')

Some courses are non-compulsory ('optional courses')

Some courses are worth 1.0 unit ('full unit')

Some courses are worth 0.5 units ('half unit')

Some courses that are not listed on your programme regulations can be taken with the Programme Director's approval ('outside options')

All IR courses have controlled access (capped)

The [Course Selection and Timetables student guide](#) provides detailed guidance on the Graduate Course Selection process

## 4. Graduate Course Selection Introduction

**Paper 1:** Core course in Paper 1 is either one half unit or two half units, depending on your programme

**Paper 2 and Paper 3:** You will be able to choose from a list of full and/or half unit options

**Paper 4:** Dissertation in Paper 4 is compulsory and counts as one full unit

You can find the list of graduate courses [here](#)



## Four practical things you can do now

Familiarise yourself with your [programme regulations](#). See the School's [Guideline for Interpreting Programme Regulations](#) document for further information.

Look at the [graduate course guides](#) for details of each course's content, teaching, assessment etc. See the School's [Guidelines for interpreting course guide information](#) document for further information.

Check out the draft [LSE Timetable](#) to see the lecture and seminar arrangements. Details for each course will be outlined on the course Moodle pages (published 13 September).

Check the [Controlled access courses](#) page for details on how applicants are selected, and the deadlines for applying to individual courses. Consider drafting any supporting statements in advance. Many courses will ask students to write short statements (usually no more than 200 words) to outline their specific reasons for applying to the course and how the course might benefit the student's academic/career/research goals. TIP: Keep it simple and be specific about your reasons so the course convenor can understand your motivations.

## Useful resources and manuals

See the [LSE for You \(LfY\) Student Tutorial page](#) for guidance on how to select course and sign up for seminars.

[How to use Graduate Course Choice in LSE for You](#)

[Graduate Course Choice User Guide](#)

[How to use Seminar Sign-up in LSE for You](#)

See the FAQs for Graduate Course Choice document (to be sent via email with the slide deck and link to the recording of this session)



## 5. Part-time students

Only select the courses that you will be studying in this academic year

You will be able to register for your second-year courses in the next academic year

You are required to take the dissertation in your second year of study

We strongly encourage you to work closely with your Academic Mentor to split your study load equally across the two years of your study

## 6. Important notes

- Check your programme requirements
- Check the course guides
- Ensure that you select and submit your compulsory courses on LFY
- Check your timetable clashes
- Consider course assessments and your Autumn and Winter Term workload balance
- Remember to accept your offers within 48 hours
- Check the Course Selection and Timetables student guide for detailed guidance, including instructions on how to select your courses on LFY
- If you have any questions about the course selection process, please contact the Student Services Centre via the [online enquiry form](#).



THE LONDON SCHOOL  
OF ECONOMICS AND  
POLITICAL SCIENCE ■

**Graduate Course Selection 2024**

# Questions?

[lse.ac.uk/international-relations](https://lse.ac.uk/international-relations)

@LSEIRDept



Department of International Relations ■